

LFX NEON SERIES 16 SPEC SHEET



LFX-N-16 - TUNABLE WHITE-24V




YYZ LFX Neon series is designed to provide a very bright, crisp consistent and homogenized illumination that will accentuate any building, structure, or artistic flourish. Using high brightness surface mounted LEDs, behind a first-class eco-friendly UV-resistant Silicone polymer encapsulated flexible chamber material, the LFX Neon will provide your project with bright, consistent traces of light in shades of White, single colors. The fixture consists of uniform and even lighting with no Led hotspot. LFX Neon has a transverse minimum radius of 60mm and is horizontal bendable. Easy to install, can be cut and reconnected with IP68 protected connector. The product is supplied in 5m standard rolls or custom as needed.



SPECIFICATION

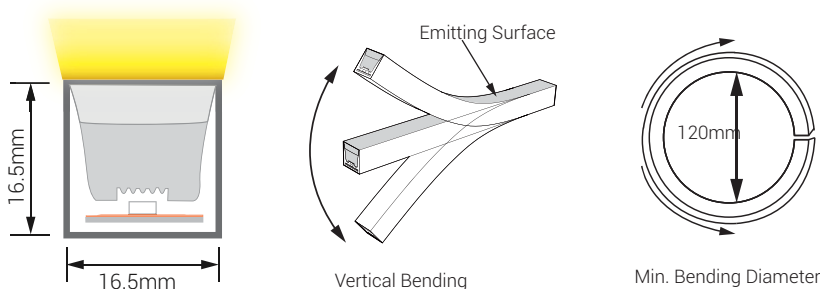
OPERATING VOLTAGE	24V DC
POWER	12W / m
LED COUNT	120LEDs/m
CUTTING UNIT	12 LEDs
CUTTING LENGTH	100 mm
MIN. BEND DIA.	120mm
LED SOURCE	SMD LED 2835
CCT	2200K + 5700K, 2700K + 5700K, 3000K + 5700K
CRI	80, 90
MAX. RUN LENGTH	32.80ft / 10 m(Single Feed), 65.61 ft / 20 m (Double Feed)
BEAM ANGLE	120°
LAMP LIFE	70, 000 hours L70@25°C, 50, 000 hours L70@50°C
MATERIAL	Silicone
OPERATING TEMP	-40°C to +55°C
IP RATING	IP68
IK RATING	IK08
WARRANTY	5 years

-  **SMD LED 2835**
LED Quality
-  **24V DC**
Working Voltage
-  **12W/m**
Rated power

DELIVERED LUMENS BY CCT

Color	lm / m
2200K + 5700K	263lm/m + 294lm/m
2700K + 5700K	333lm/m + 304lm/m
3000K + 5700K	272lm/m + 278lm/m

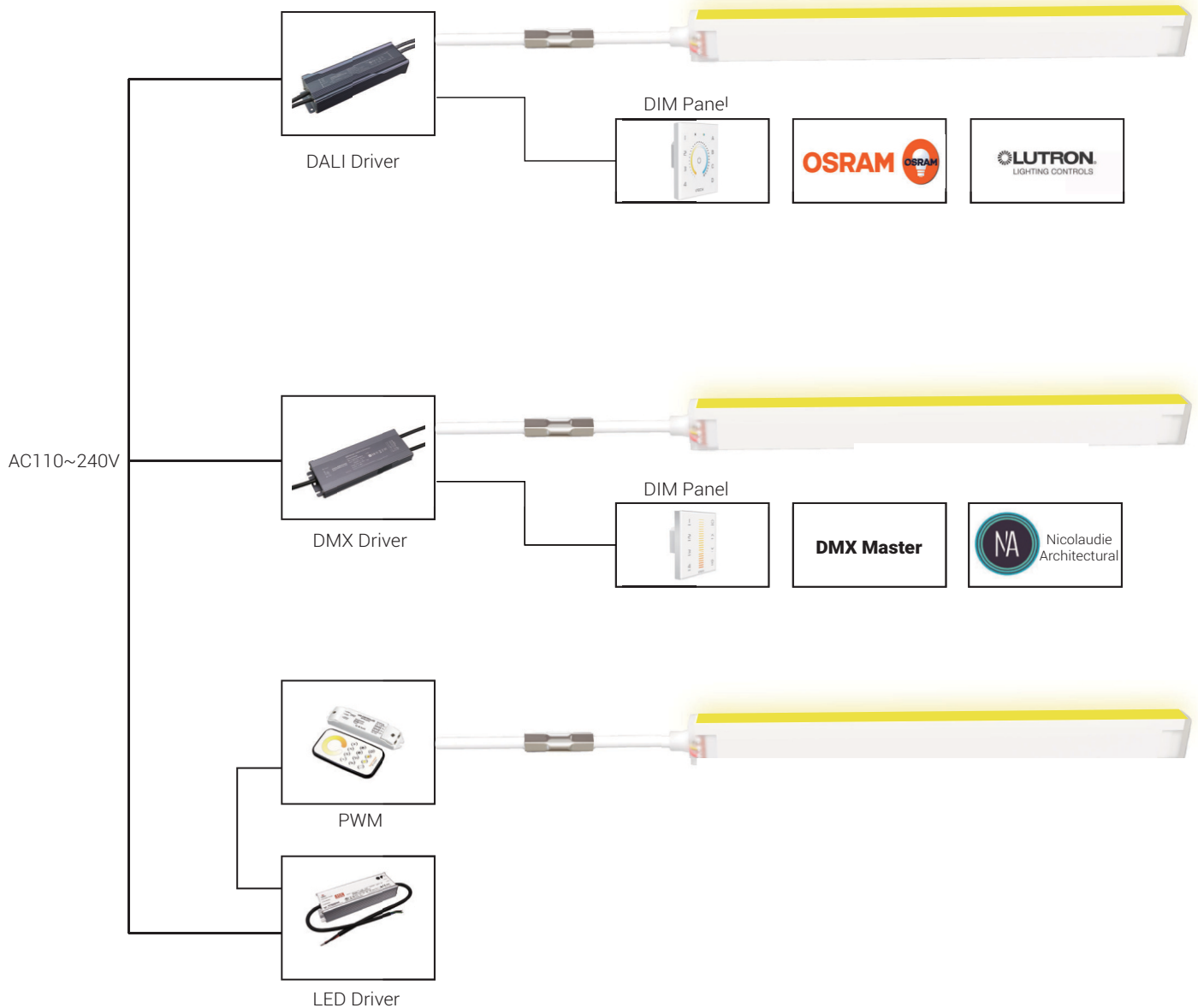
DIMENSION



LFX NEON SERIES 16 SPEC SHEET

LFX-N-16 - TUNABLE WHITE-24V

CONNECTION DIAGRAM



LFX NEON SERIES 16 SPEC SHEET



LFX-N-16 - TUNABLE WHITE-24V

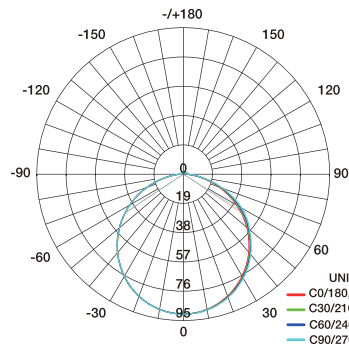
ORDERING CODE

PRODUCT	TYPE	MODEL	BENDING	POWER	VOLTAGE	CRI	COLOR	CONTROL
LFX	N - Neon	16 - 16	VB - Vertical Bending	12 - 12W	DC - 24V DC	80 - 80 CRI 90 - 90 CRI	CT 22+57 - 2200K + 5700K CT 27+57 - 2700K + 5700K CT 30+57 - 3000K + 5700K	SW - Switch DALI - DALI DMX - DMX DIM - 0/1-10V TRI - TRIAC

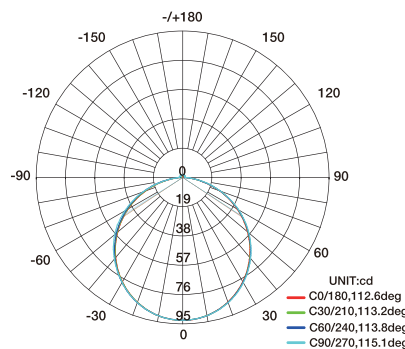
Sample: LFX-N-16-VB-12-DC-80-CT22+57-SW

PHOTOMETRIC DATA

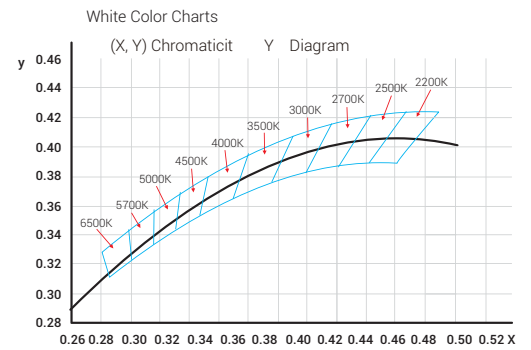
Illuminance Distribution



AVERAGE BEAM ANGLE(50%):113.8DEG
3000K

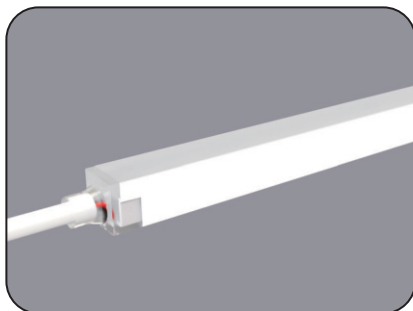


AVERAGE BEAM ANGLE(50%):113.7DEG
5700K

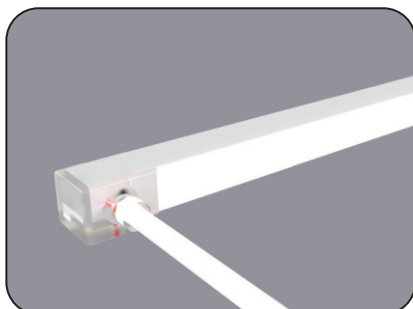
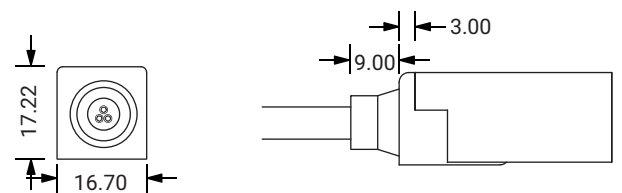


ACCESSORIES

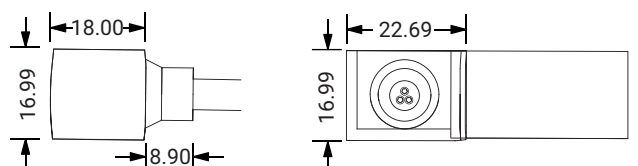
MOLD INJECTION CONNECTOR (IP68 Factory Assembly Only)



Direct Entry Connector
MJ-LFX16-DW-D01/02/03
MJ-LFX16-DW-D01SM
MJ-LFX16-DW-D02SF
MJ-LFX16-DW-D03SFM



Side Entry Connector
MJ-LFX16-DW-S01/02/03
MJ-LFX16-DW-S01SM
MJ-LFX16-DW-S02SF
MJ-LFX16-DW-S03SFM

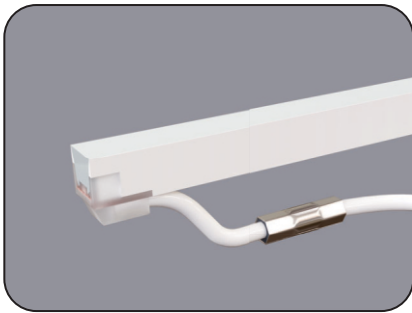
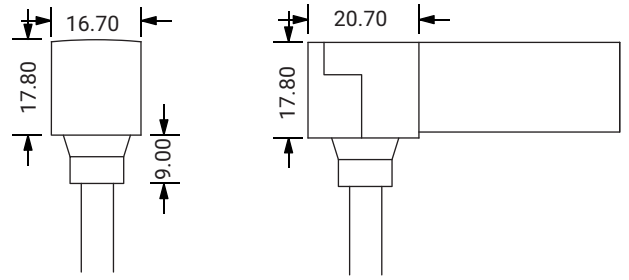


LFX NEON SERIES 16 SPEC SHEET

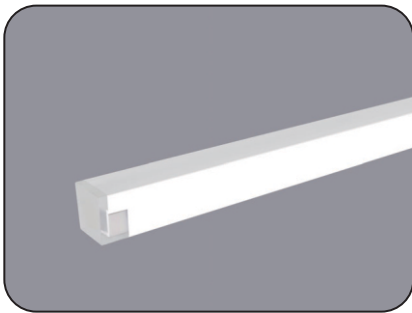
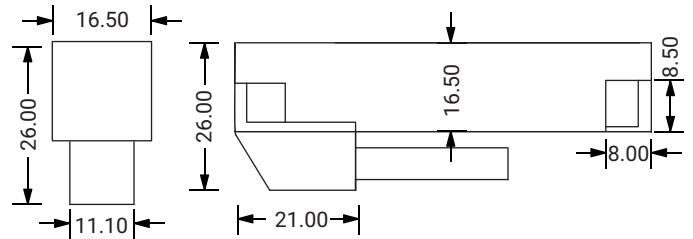
LFX-N-16 - TUNABLE WHITE-24V



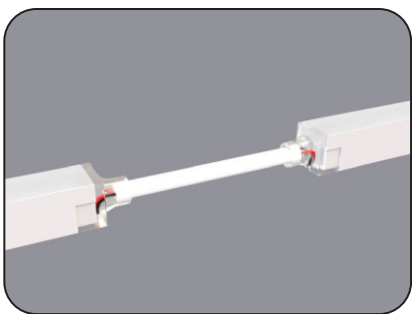
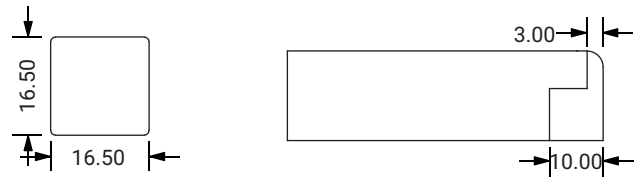
Bottom Entry Connector
MJ-LFX16-DW-B01/02/03
MJ-LFX16-DW-B01SM
MJ-LFX16-DW-B02SF
MJ-LFX16-DW-B03SFM



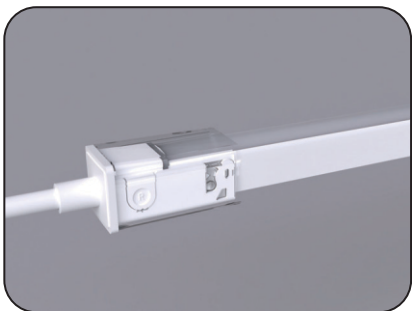
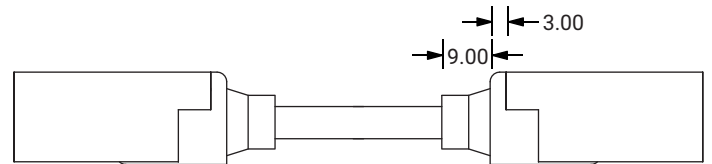
L Shape Entry Connector
MJ-LFX16-DW-L01/02/03
MJ-LFX16-DW-L01SM
MJ-LFX16-DW-L02SF
MJ-LFX16-DW-L03SFM



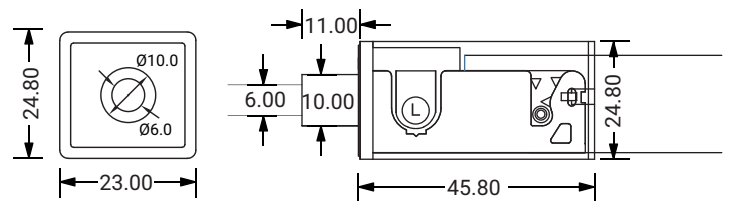
End Cap



Jumper
MJ-LFX16-DW-D-JC

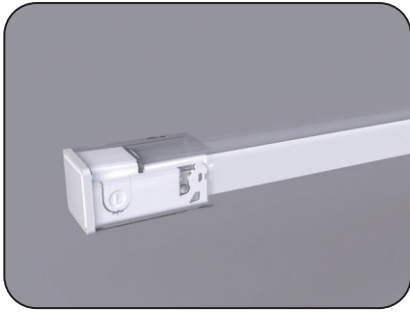


DIY Snap Connector
DIY-SN-FR-16-D-01/02-DW

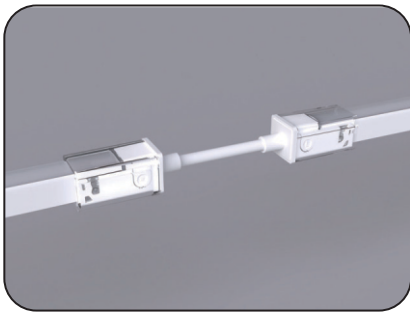
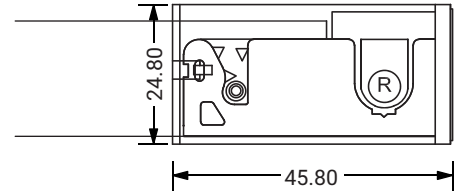
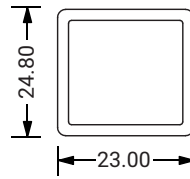


LFX NEON SERIES 16 SPEC SHEET

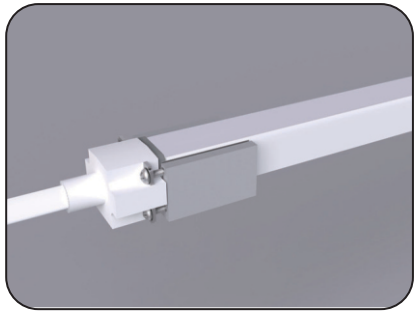
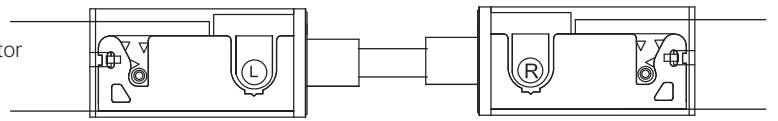
LFX-N-16 - TUNABLE WHITE-24V



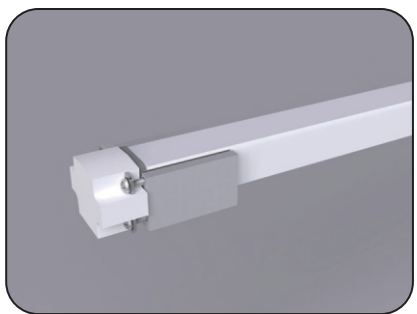
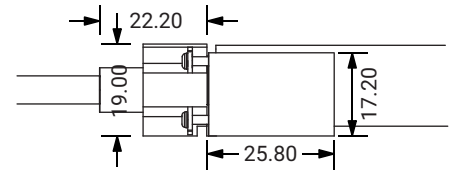
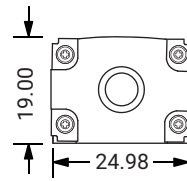
DIY Snap End Cap
DIY-SN-END-16-D-01/02



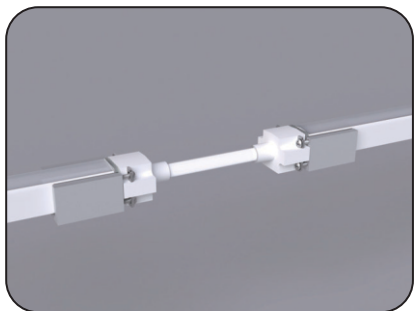
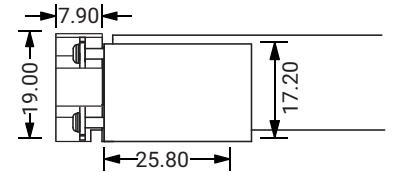
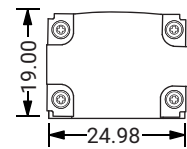
DIY Snap Extent Connector
DIY-SN-EXT-16-DW



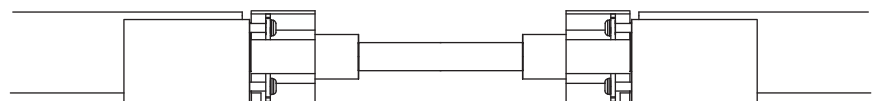
DIY Screw Connector
DIY-SC-FR-16-D-01/02-DW



DIY Screw End Cap
DIY-SC-END-16

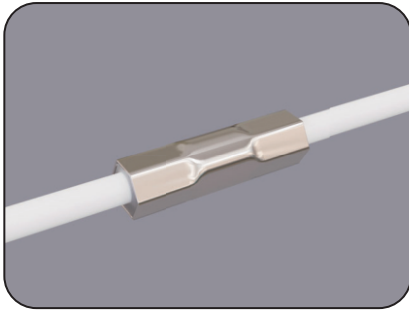


DIY Screw Extent Connector
DIY-SC-EXT-16-DW

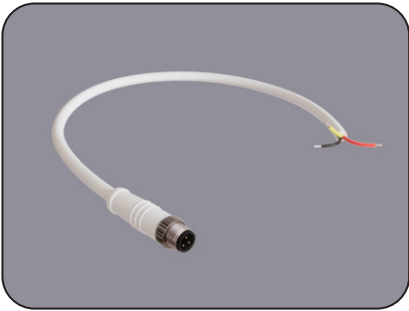
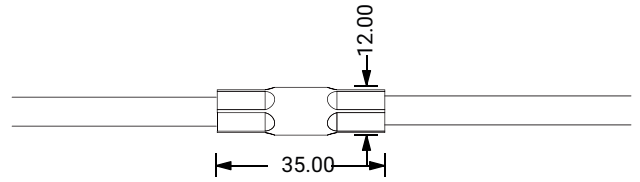


LFX NEON SERIES 16 SPEC SHEET

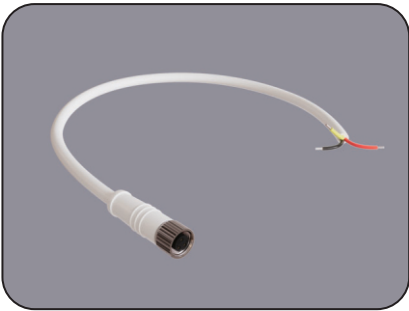
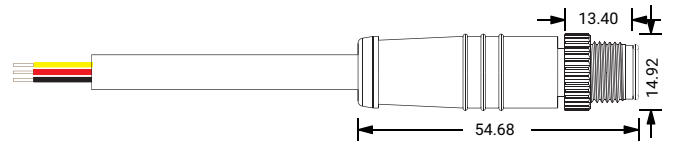
LFX-N-16 - TUNABLE WHITE-24V



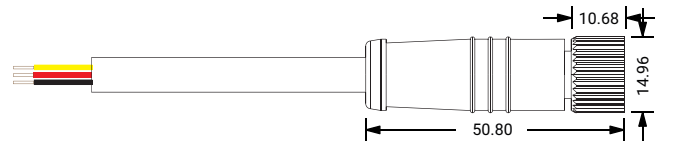
Waterproof Interrupter



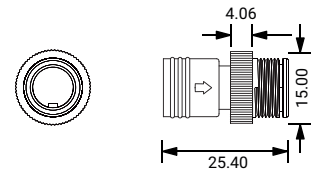
Male Connector
M12-M-3C-20AWG-D6-W-0327-S



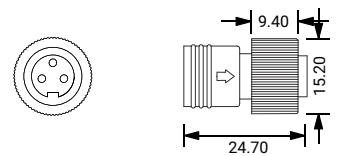
Female Connector
M12-F-3C-20AWG-D6-W-0327-S



Male Connector End Cap
SYZ-EC-M12-M



Female Connector End Cap
SYZ-EC-M12-F-5C

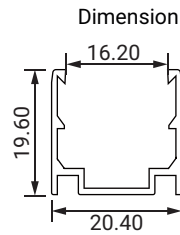
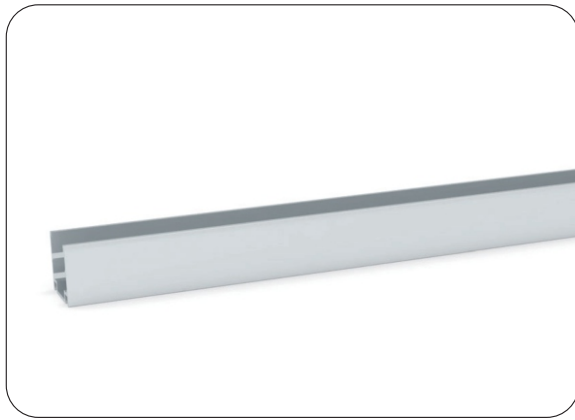


LFX NEON SERIES 16 SPEC SHEET

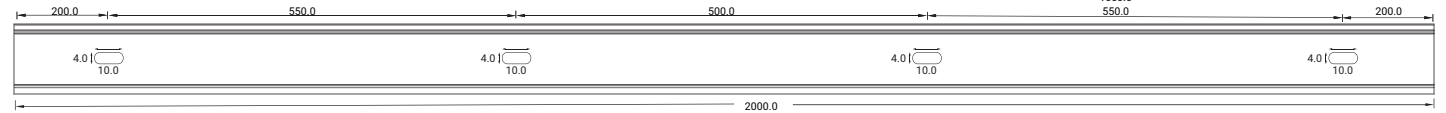
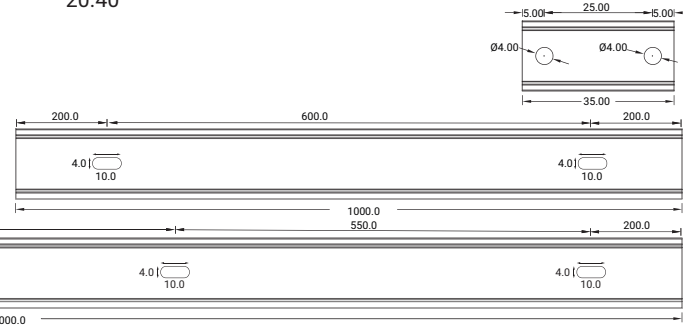
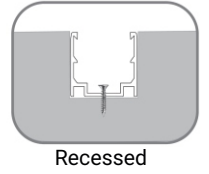
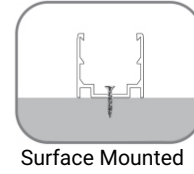
LFX-N-16 - TUNABLE WHITE-24V



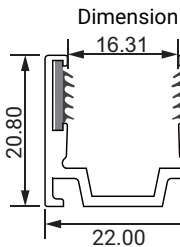
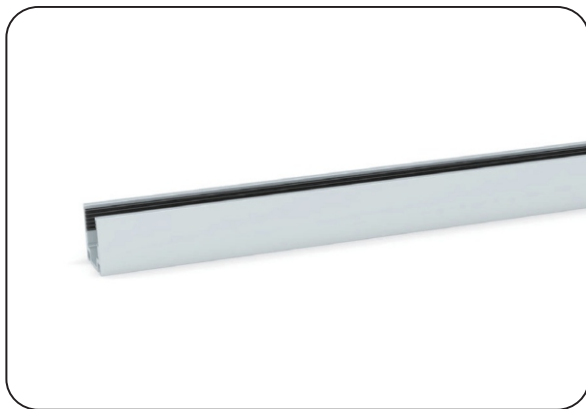
ALUMINUM CHANNEL



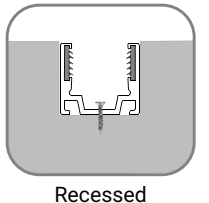
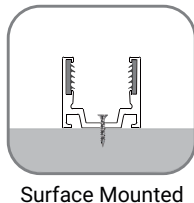
Installation Way



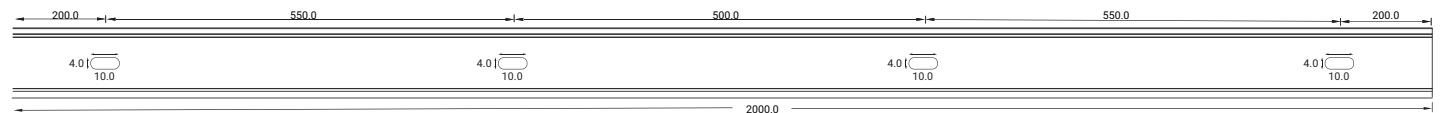
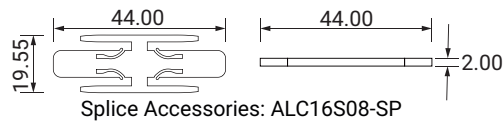
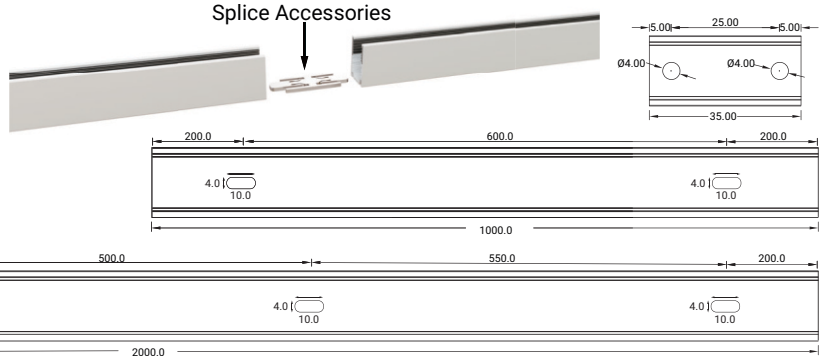
Model	W x H (mm)	Standard Length	Screw Holes	Holes Numbers
ALC16S02-035	20.40 x 19.60	35mm	Ø4.00mm	2
ALC16S02-100		1000mm	4.00mm	2
ALC16S02-200		2000mm	4.00mm	4



Installation Way



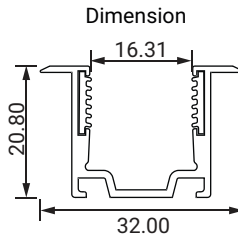
Splice Accessories



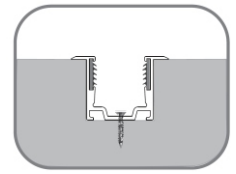
Model	W x H (mm)	Standard Length	Screw Holes	Holes Numbers
ALC16S08-035	22.00 x 20.80	35mm	Ø4.00mm	2
ALC16S08-100		1000mm	4.00mm	2
ALC16S08-200		2000mm	4.00mm	4

LFX NEON SERIES 16 SPEC SHEET

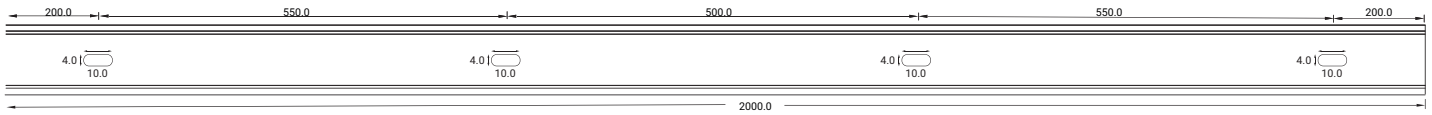
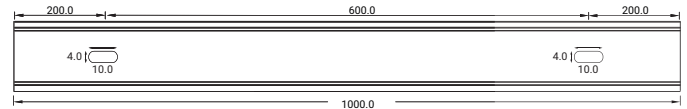
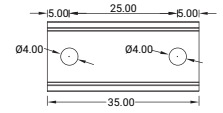
LFX-N-16 - TUNABLE WHITE-24V



Installation Way



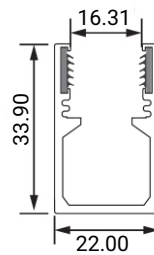
Recessed



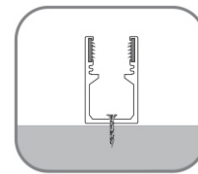
Model	W x H (mm)	Standard Length	Screw Holes	Holes Numbers
ALC16S07-035	32.00 x 20.80	35mm	Ø4.00mm	2
ALC16S07-100		1000mm	4.00mm	2
ALC16S07-200		2000mm	4.00mm	4



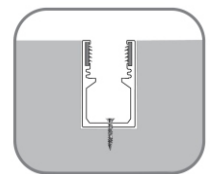
Dimension



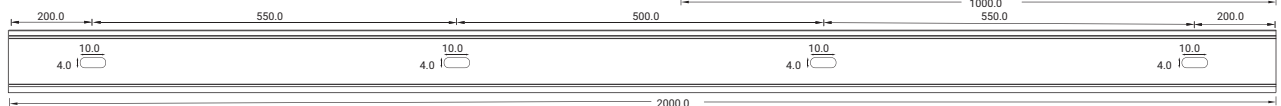
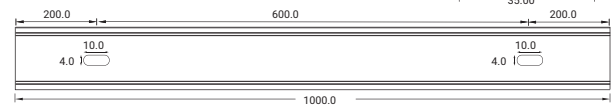
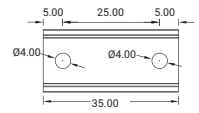
Installation Way



Surface Mounted



Recessed



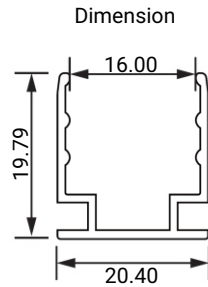
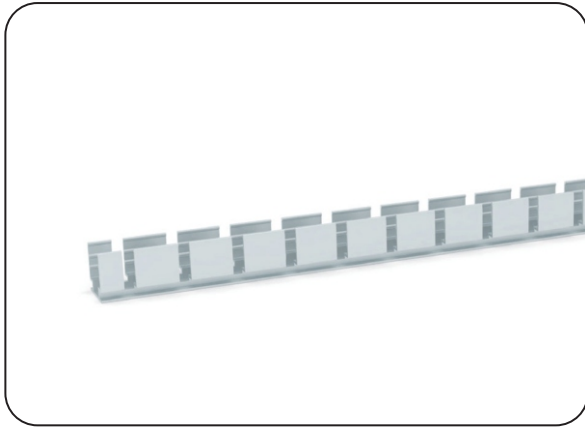
Model	W x H (mm)	Standard Length	Screw Holes	Holes Numbers
ALC16H02-035	22.00 x 33.90	35mm	Ø4.00mm	2
ALC16H02-100		1000mm	4.00mm	2
ALC16H02-200		2000mm	4.00mm	4

LFX NEON SERIES 16 SPEC SHEET

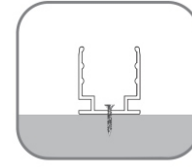
LFX-N-16 - TUNABLE WHITE-24V



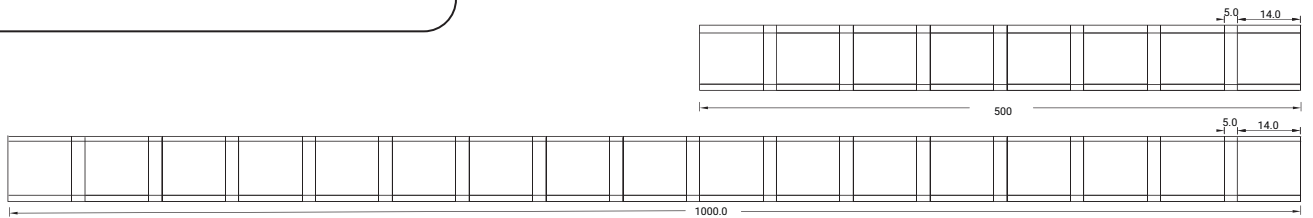
FLEXIBLE ALUMINUM CHANNEL



Installation Way

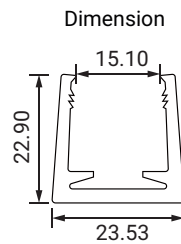


Surface Mounted

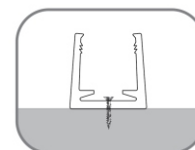


Model	W x H (mm)	Standard Length
ALC16S02FLX05	20.40 x 19.79	500mm
ALC16S02FLX10		1000mm

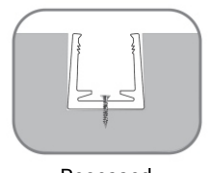
PLASTIC CHANNEL



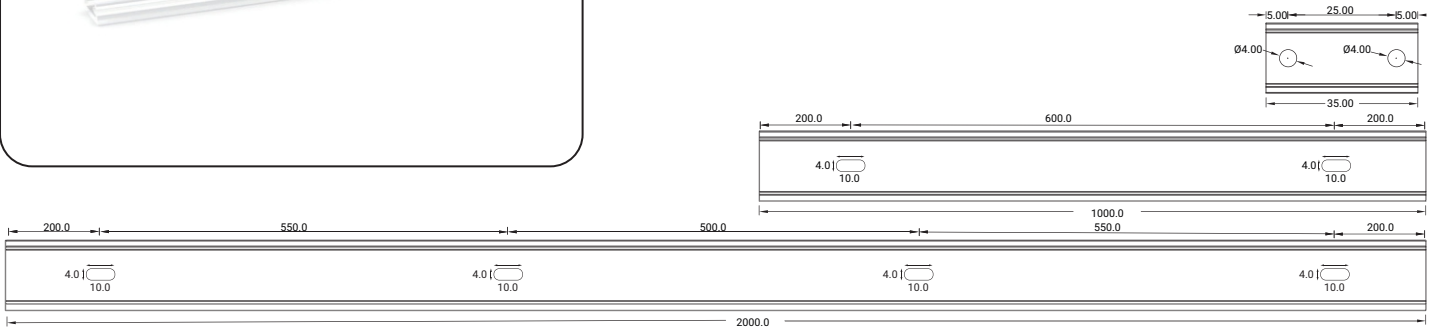
Installation Way



Surface Mounted



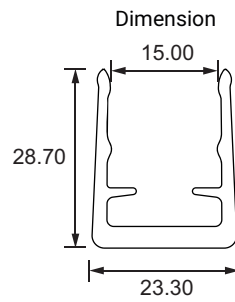
Recessed



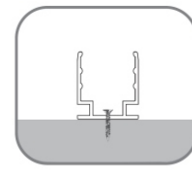
Model	W x H (mm)	Standard Length	Screw Holes	Holes Numbers
PC16/17S02-T-100	23.53 x 22.90	1000mm	Ø4.0mm	2

LFX NEON SERIES 16 SPEC SHEET

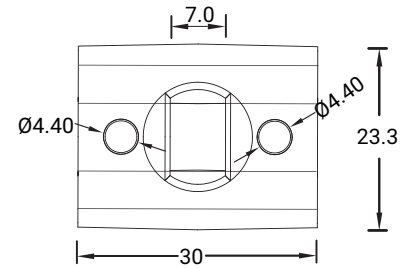
LFX-N-16 - TUNABLE WHITE-24V



Installation Way

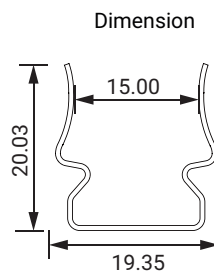
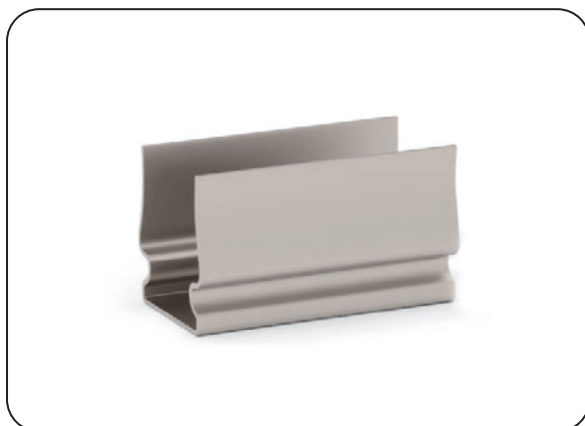


Surface Mounted

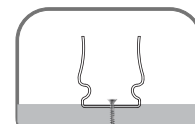


Model	W x H (mm)	Standard Length	Screw Holes	Holes Numbers
SJJ-ZSH-008-PC	23.30 x 28.70	30mm	Ø4.40mm	2

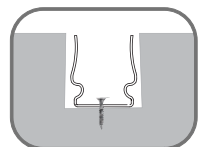
STAINLESS STEEL CHANNEL



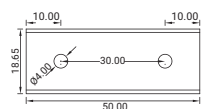
Installation Way



Surface Mounted



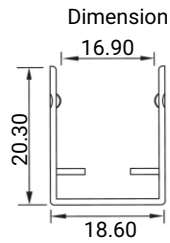
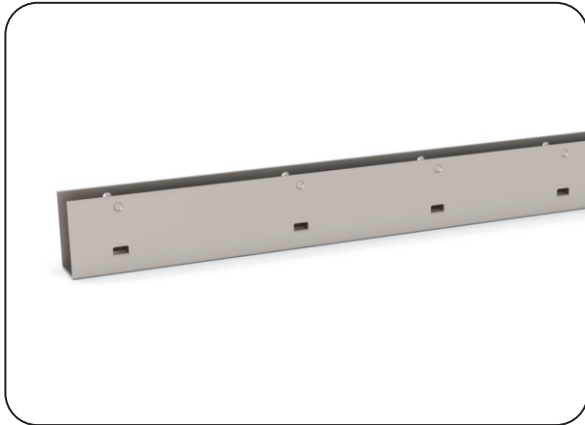
Recessed



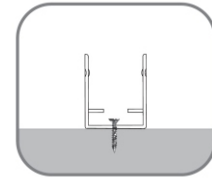
Model	W x H (mm)	Standard Length	Screw Holes	Holes Numbers
SSC16S01-05	19.35 x 20.03	50mm	Ø4.0mm	2

LFX NEON SERIES 16 SPEC SHEET

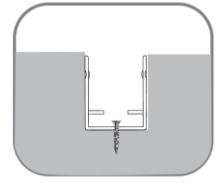
LFX-N-16 - TUNABLE WHITE-24V



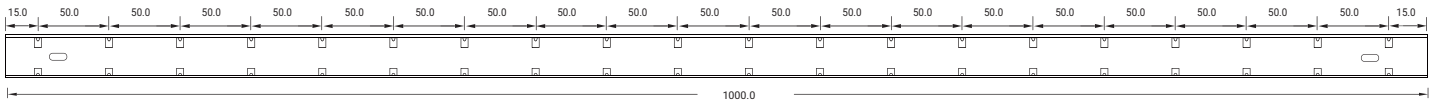
Installation Way



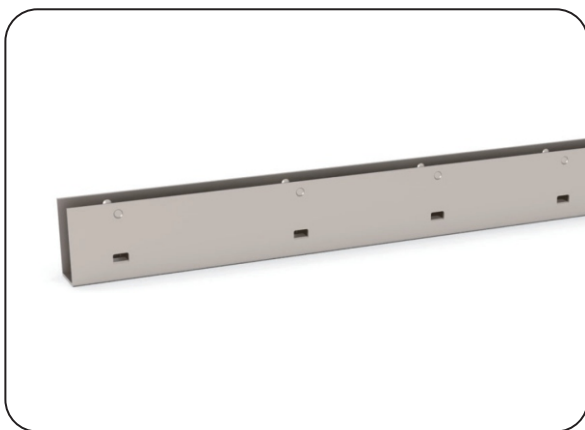
Surface Mounted



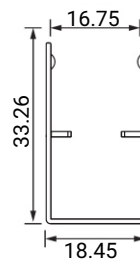
Recessed



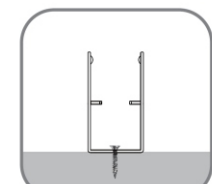
Model	W x H (mm)	Standard Length	Screw Holes	Holes Numbers
SSC16S02-100	18.60 x 20.30	1000mm	4.0 x 10mm	2



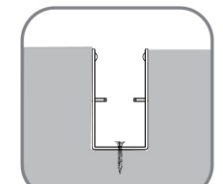
Dimension



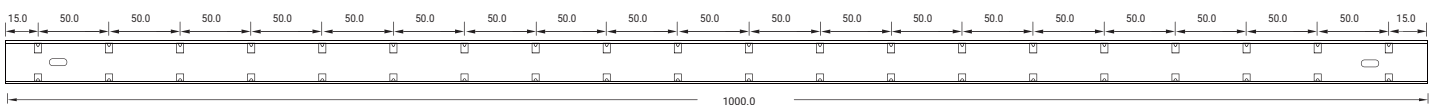
Installation Way



Surface Mounted



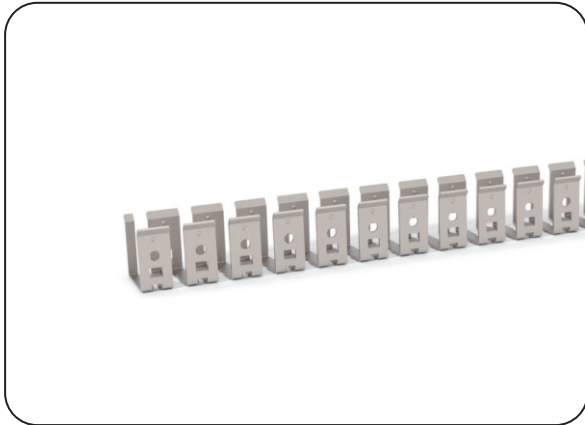
Recessed



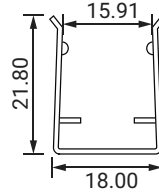
Model	W x H (mm)	Standard Length	Screw Holes	Holes Numbers
SSC16H01-100	18.45 x 33.26	1000mm	4.0 x 10mm	2

LFX NEON SERIES 16 SPEC SHEET

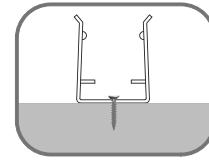
LFX-N-16 - TUNABLE WHITE-24V



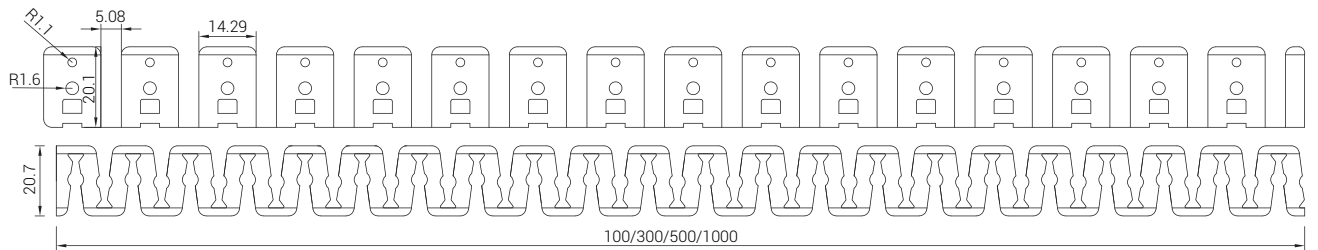
Dimension



Installation Way

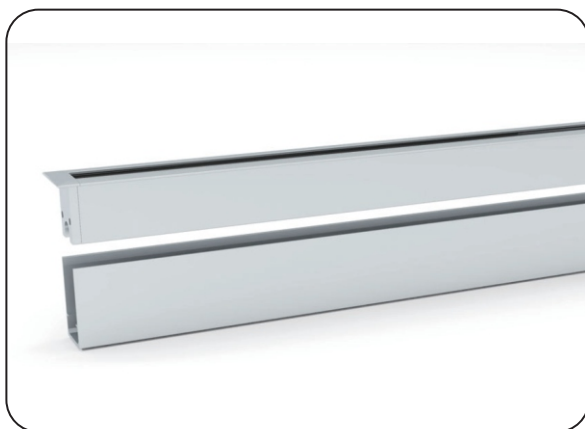


Surface Mounted

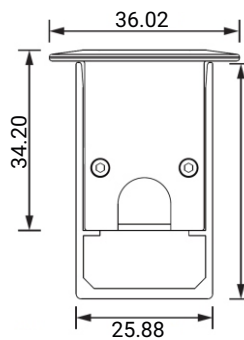


Model	W x H (mm)	Standard Length
SSC16FLX01	18.00 x 21.80	100mm
SSC16FLX03		300mm
SSC16FLX05		500mm
SSC16FLX10		1000mm

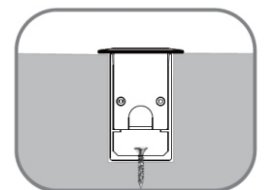
BURIED AND RECESSED TYPE



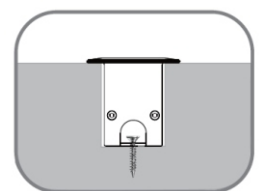
Dimension



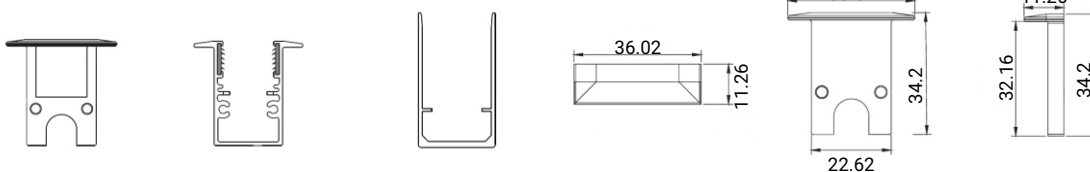
Installation Way



ALC-WL-B-02-A
ALC-WL-B-02-B
Buried Mounted

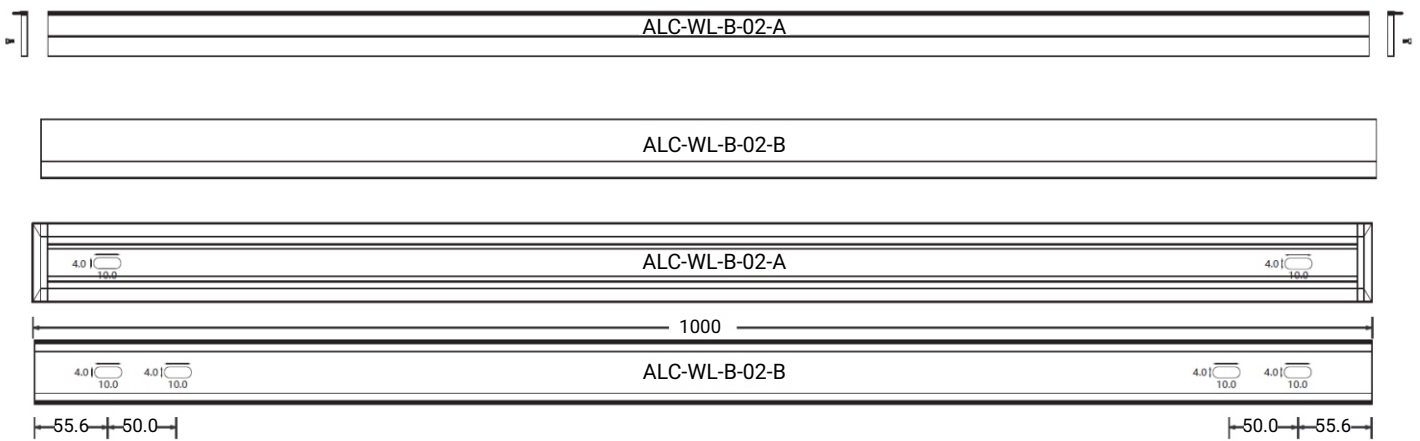
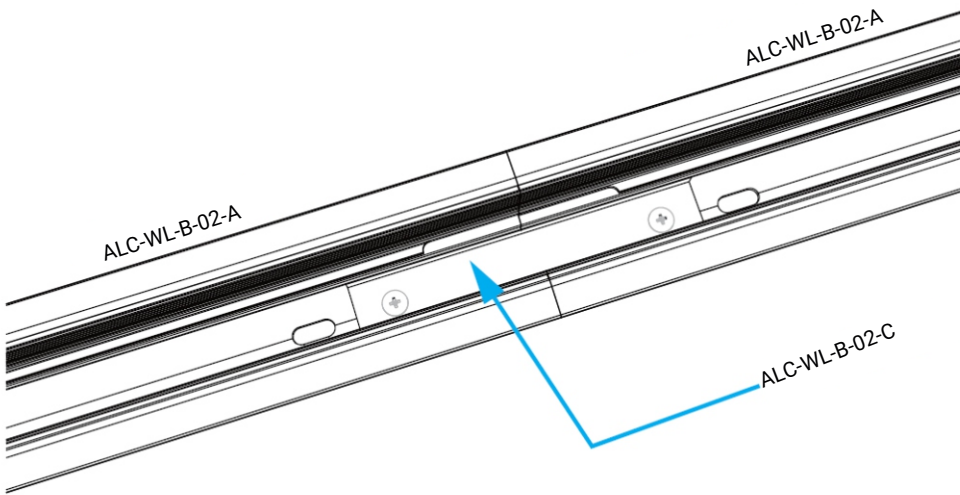
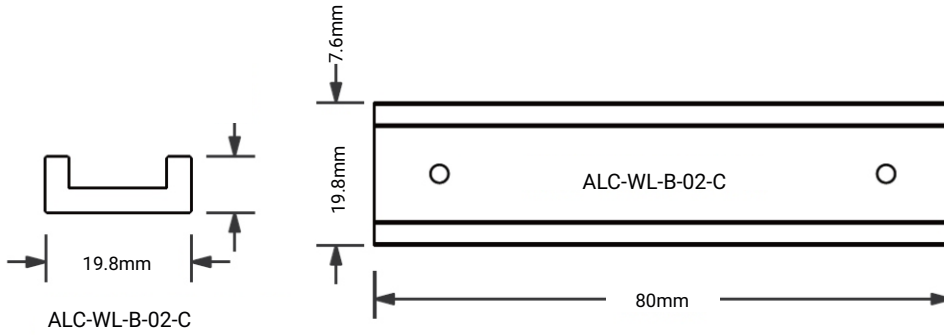


ALC-WL-B-02-A
Recessed



LFX NEON SERIES 16 SPEC SHEET

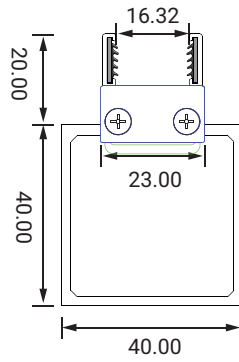
LFX-N-16 - TUNABLE WHITE-24V



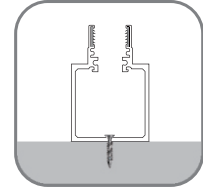
Model	W x H (mm)	Installation Way	Optional Length
ALC-WL-B-02-A	36.02 x 34.20	Recessed	500/1000/2000mm
ALC-WL-B-02-B	25.88 x 44.86	Buried Mounted	500/1000/2000mm
ALC-WL-B-02-C	19.8 x 7.6	Connective Accessories	80mm

LFX NEON SERIES 16 SPEC SHEET

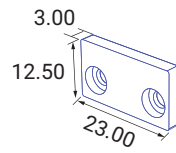
LFX-N-16 - TUNABLE WHITE-24V



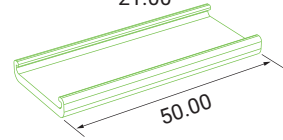
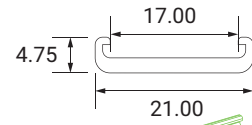
Installation Way



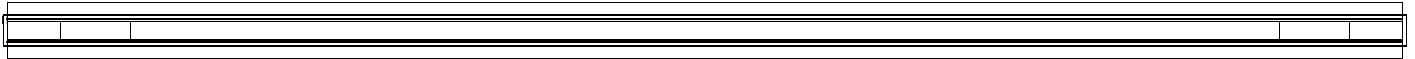
Surface Mounted



ALC-16H03-GZ
Fixing Cap



ALC-16H03-GDB-50
Connective Fixing Clips



Model	W x H (mm)	Installation Way	Optional Length
ALC16H03-100	40.00 x 60.00	Surface Mounted	1000/2000mm
ALC16H03-200		Surface Mounted	1000/2000mm