

# LFX NEON SERIES 16 SPEC SHEET



LFX-N-16 -MONO 24V



YYZ LFX Neon series is designed to provide a very bright, crisp consistent and homogenized illumination that will accentuate any building, structure, or artistic flourish. Using high brightness surface mounted LEDs, behind a first-class eco-friendly UV-resistant Silicone polymer encapsulated flexible chamber material, the LFX Neon will provide your project with bright, consistent traces of light in shades of White, single colors. The fixture consists of uniform and even lighting with no Led hotspot. LFX Neon has a transverse minimum radius of 60mm and is horizontal bendable. Easy to install, can be cut and reconnected with IP68 protected connector. The product is supplied in 5m standard rolls or custom as needed.



## SPECIFICATION

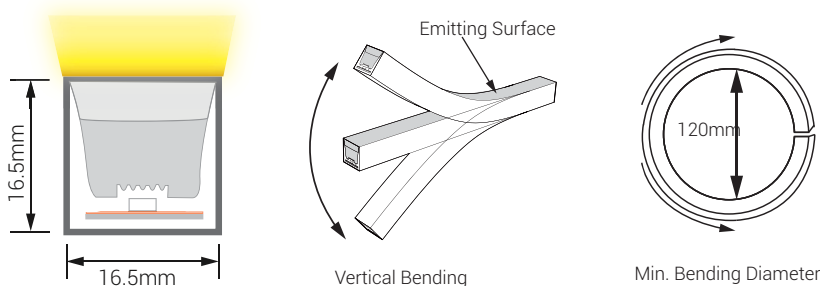
OPERATING VOLTAGE	24V DC
POWER	10W / m
LED COUNT	120LEDs/m
CUTTING UNIT	12 LEDs
CUTTING LENGTH	100 mm
MIN. BEND DIA.	120mm
LED SOURCE	SMD LED 2835
CCT	2200K, 2700K, 3000K, 3500K, 4000K, 4500K, 5000K, 6500K, Green, Blue, Red, Amber
CRI	>80, >90
BINNING	One Bin
MAX. RUN LENGTH	32.80ft / 10 m(Single Feed), 65.61 ft / 20 m (Double Feed)
BEAM ANGLE	120°
LAMP LIFE	70, 000 hours L70@25°C, 50, 000 hours L70@50°C
MATERIAL	Silicone
OPERATING TEMP	-40°C to +55°C
IP RATING	IP68
IK RATING	IK08
WARRANTY	5 years

- SMD LED 2835**  
LED Quality
- 24V DC**  
Working Voltage
- 10W/m**  
Rated power

## DELIVERED LUMENS BY CCT

Color	lm / m
2200K	319lm/m
2700K	355lm/m
3000K	360lm/m
3500K	330lm/m
4000K	311lm/m
4500K	320lm/m
5000K	340lm/m
6500K	317lm/m
Green	280lm/m
Blue	47lm/m
Red	140lm/m
Amber	100lm/m

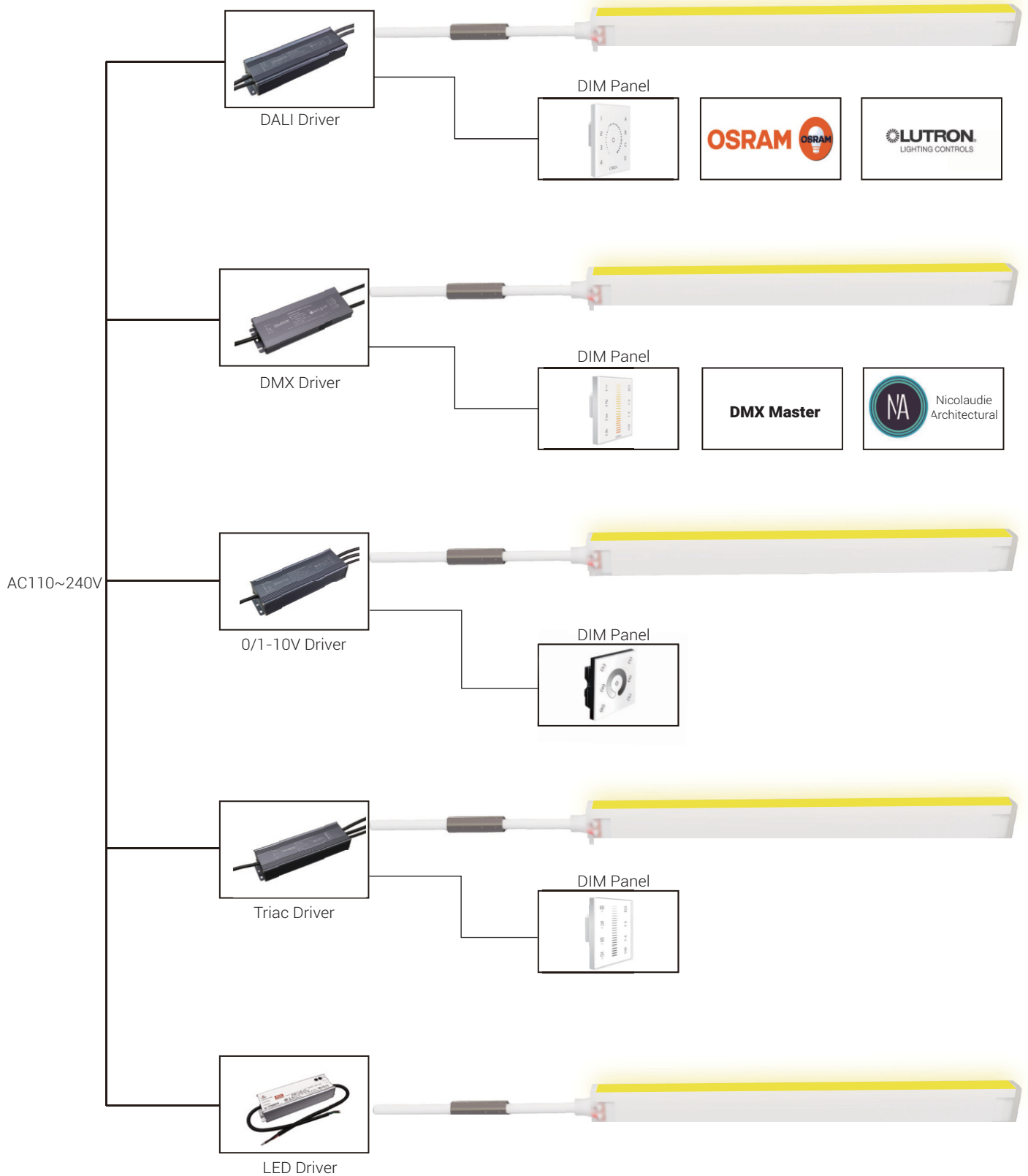
## DIMENSION



# LFX NEON SERIES 16 SPEC SHEET

LFX-N-16 -MONO 24V

## CONNECTION DIAGRAM



# LFX NEON SERIES 16 SPEC SHEET

LFX-N-16 -MONO 24V



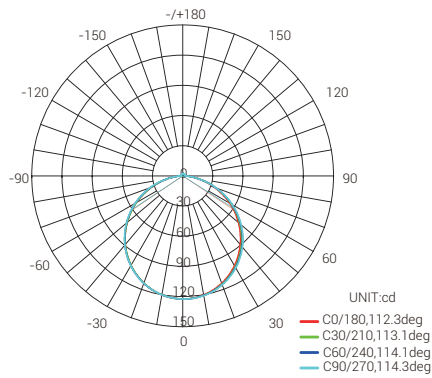
## ORDERING CODE

PRODUCT	TYPE	MODEL	BENDING	POWER	VOLTAGE	CRI	COLOR	CONTROL
LFX	N - Neon	16 - 16	VB - Vertical Bending	10 - 10W	DC - 24V DC	80 - 80 CRI 90 - 90 CRI	CT 22 - 2200K CT 27 - 2700K CT 30 - 3000K CT 35 - 3500K CT 40 - 4000K CT 45 - 4500K CT 50 - 5000K CT 65 - 6500K GR - Green BL - Blue RE - Red AM - Amber	SW - Switch DALI - DALI DMX - DMX DIM - 0/1-10V TRI - TRIAC

Sample: LFX-N-16-VB-10-DC-80-CT22-SW

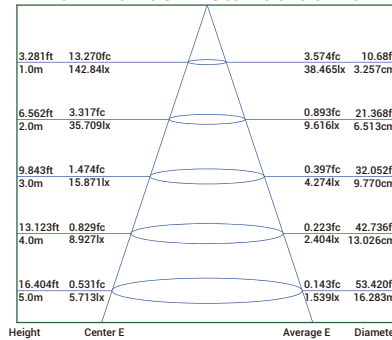
## PHOTOMETRIC DATA

### Illuminance Distribution

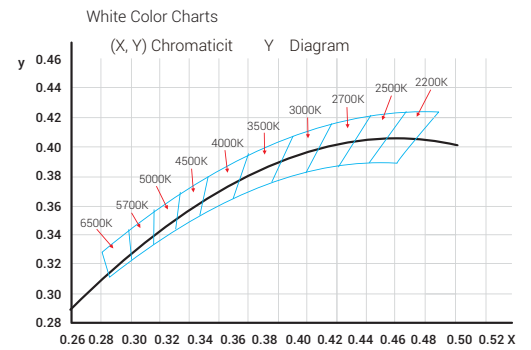


AVERAGE BEAM ANGLE(50%):113.4DEG

### Illuminance-Distance Curve

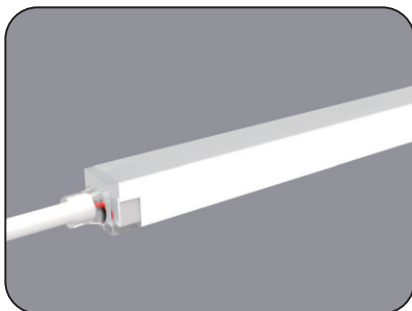


Beam Angle:116.9DEG

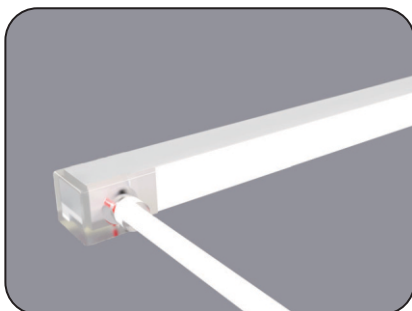
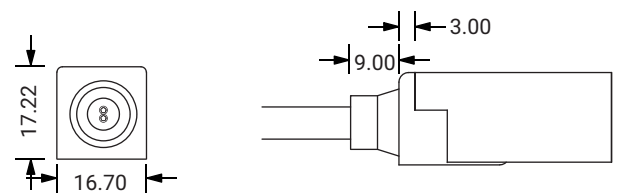


## ACCESSORIES

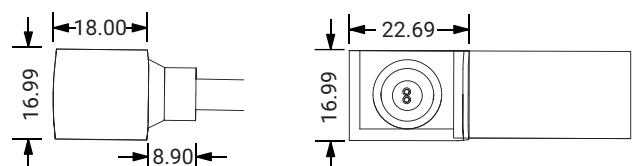
### MOLD INJECTION CONNECTOR (IP68 Factory Assembly Only)



Direct Entry Connector  
MJ-LFX16-A-D01/02/03  
MJ-LFX16-A-D01SM  
MJ-LFX16-A-D02SF  
MJ-LFX16-A-D03SFM



Side Entry Connector  
MJ-LFX16-A-S01/02/03  
MJ-LFX16-A-S01SM  
MJ-LFX16-A-S02SF  
MJ-LFX16-A-S03SFM

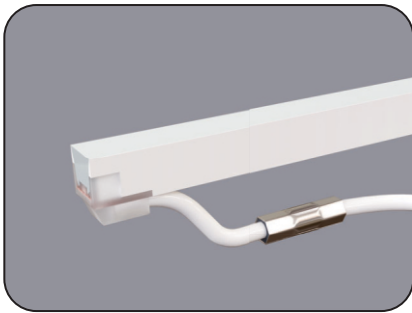
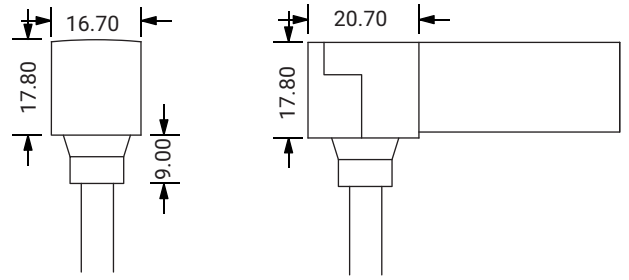


# LFX NEON SERIES 16 SPEC SHEET

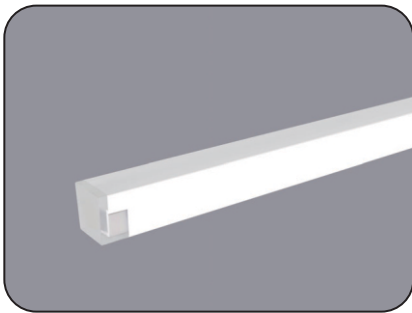
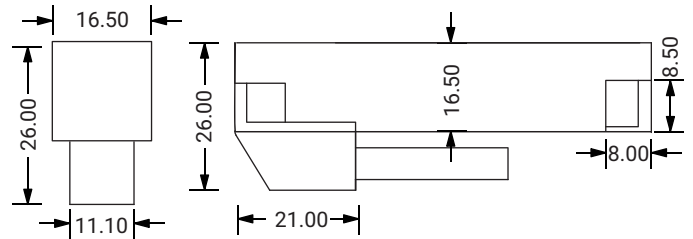
LFX-N-16 -MONO 24V



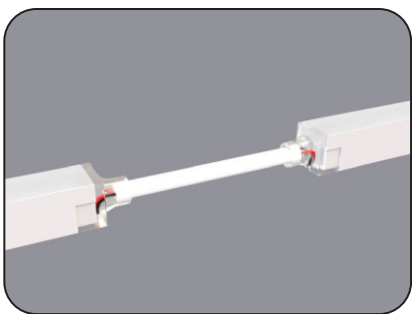
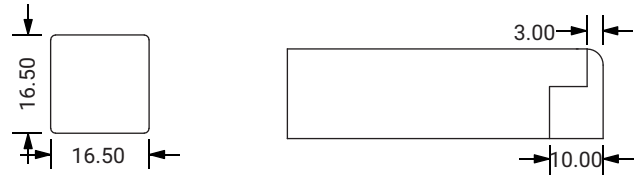
Bottom Entry Connector  
MJ-LFX16-A-B01/02/03  
MJ-LFX16-A-B01SM  
MJ-LFX16-A-B02SF  
MJ-LFX16-A-B03SFM



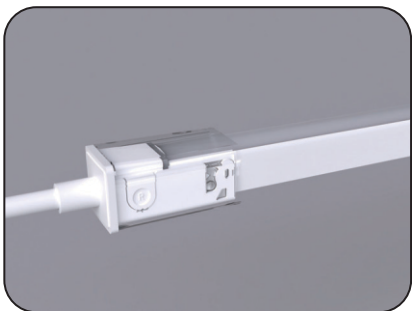
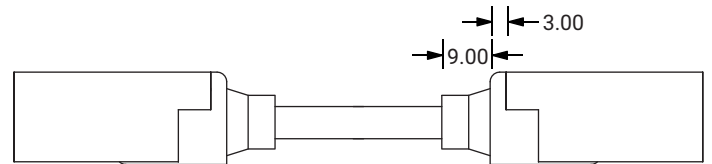
L Shape Entry Connector  
MJ-LFX16-A-L01/02/03  
MJ-LFX16-A-L01SM  
MJ-LFX16-A-L02SF  
MJ-LFX16-A-L03SFM



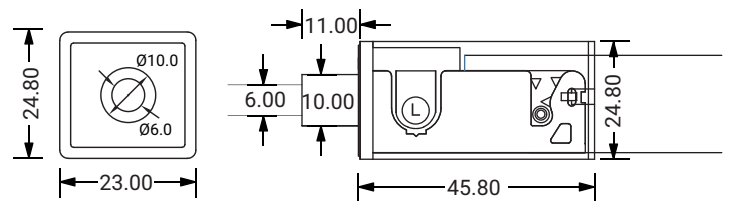
End Cap



Jumper  
MJ-LFX16-A-D-JC

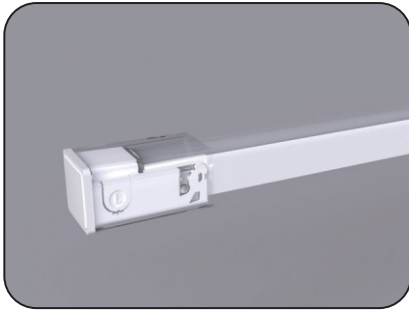


DIY Snap Connector  
DIY-SN-FR-16-D-01/02-A

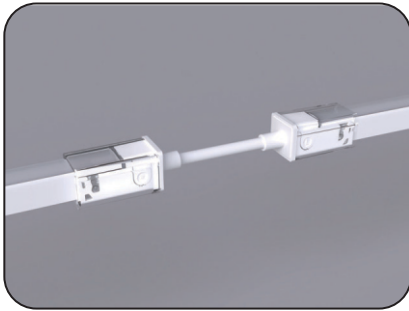
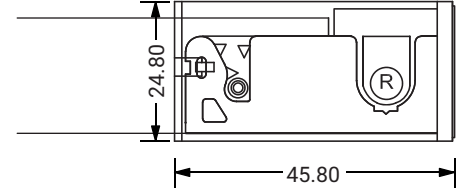
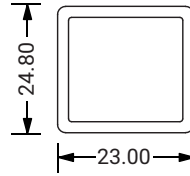


# LFX NEON SERIES 16 SPEC SHEET

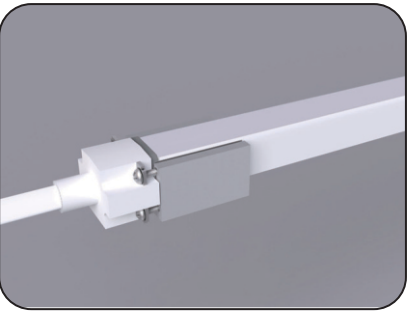
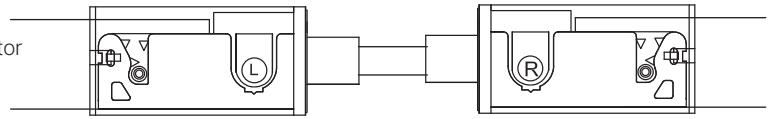
LFX-N-16 -MONO 24V



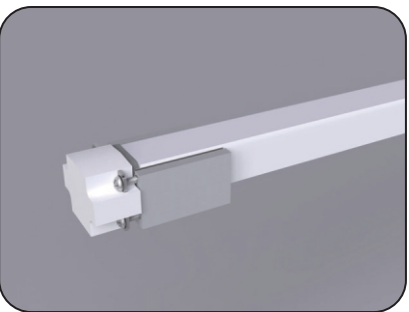
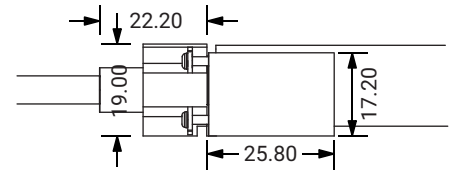
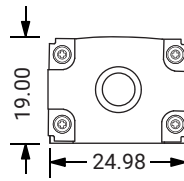
DIY Snap End Cap  
DIY-SN-END-16-D-01/02



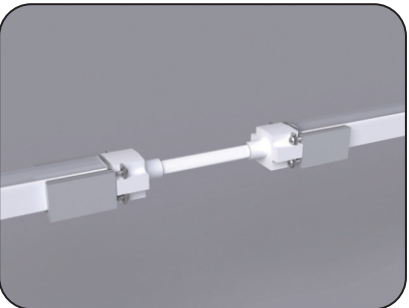
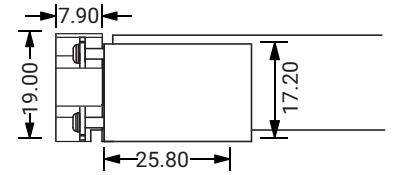
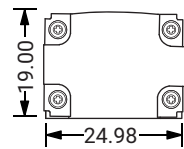
DIY Snap Extent Connector  
DIY-SN-EXT-16-A



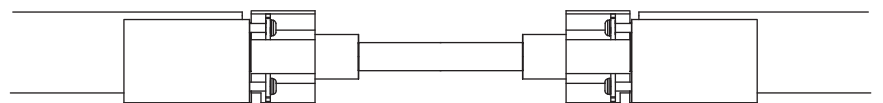
DIY Screw Connector  
DIY-SC-FR-16-D-01/02-A



DIY Screw End Cap  
DIY-SC-END-16

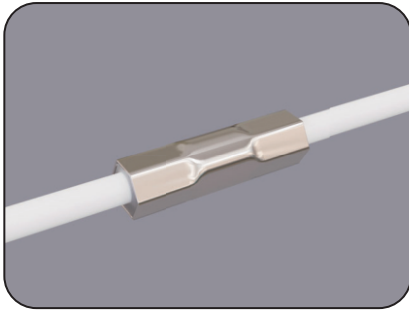


DIY Screw Extent Connector  
DIY-SC-EXT-16-A

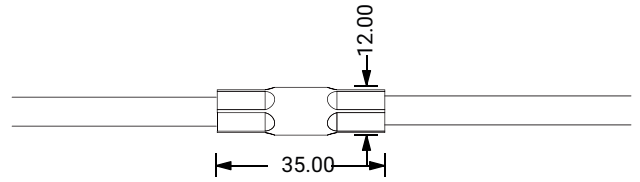


# LFX NEON SERIES 16 SPEC SHEET

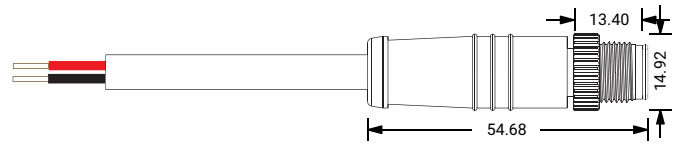
LFX-N-16 - MONO 24V



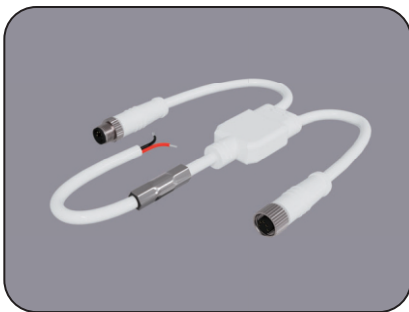
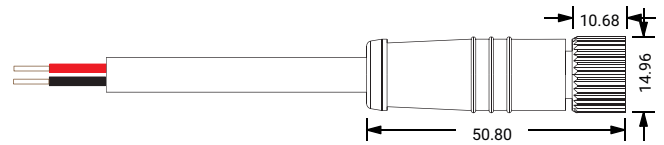
Waterproof Interrupter



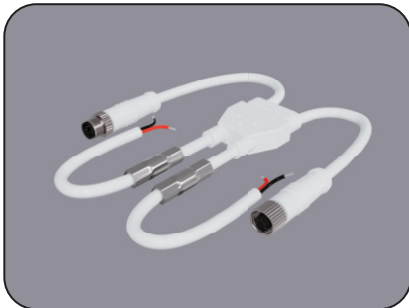
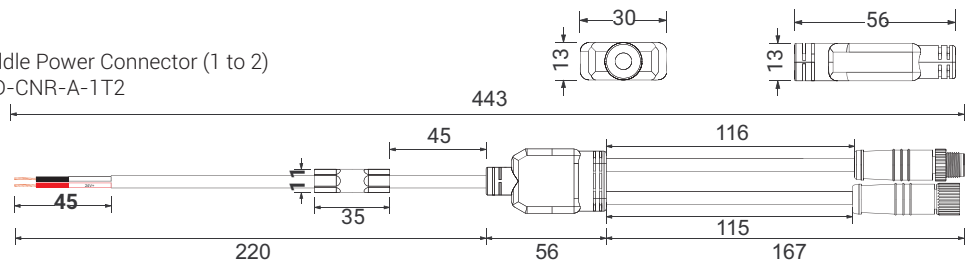
Male Connector  
M12-M-2C-18AWG-D6-W-0327-S



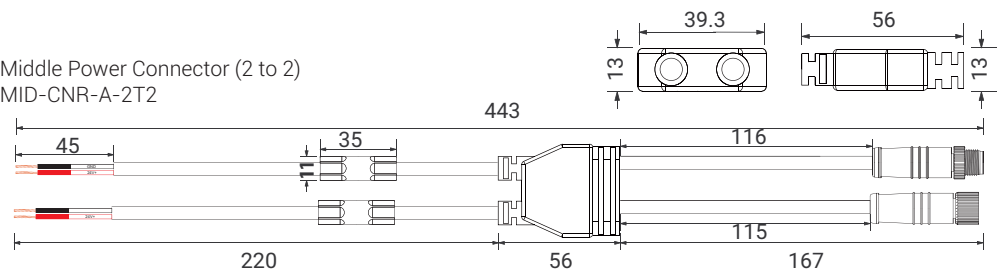
Female Connector  
M12-F-2C-18AWG-D6-W-0327-S



Middle Power Connector (1 to 2)  
MID-CNR-A-1T2

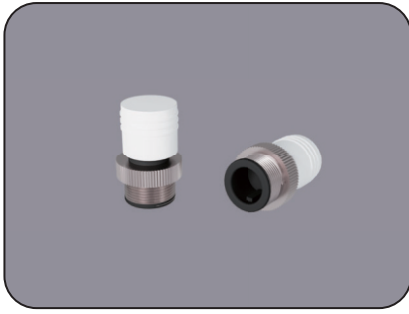


Middle Power Connector (2 to 2)  
MID-CNR-A-2T2

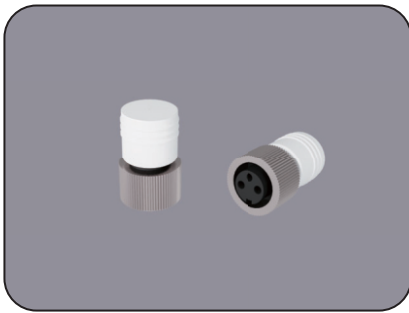
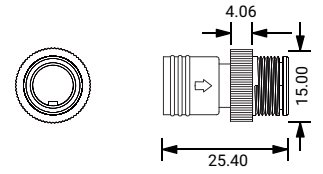


# LFX NEON SERIES 16 SPEC SHEET

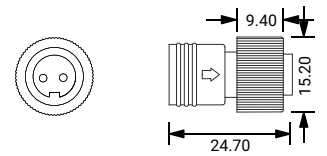
LFX-N-16 -MONO 24V



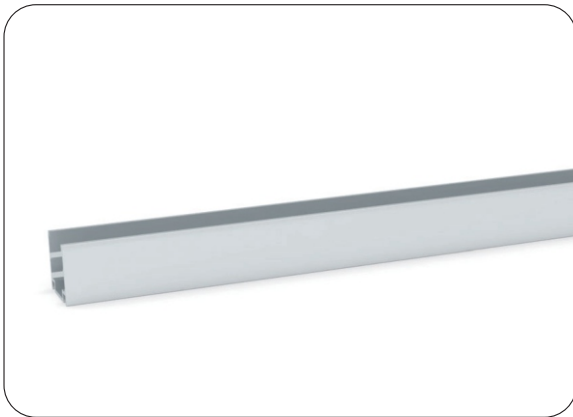
Male Connector End Cap  
SYZ-EC-M12-M



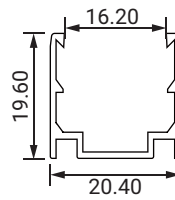
Female Connector End Cap  
SYZ-EC-M12-F-2C



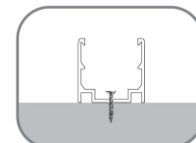
## ALUMINUM CHANNEL



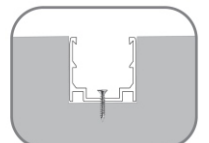
Dimension



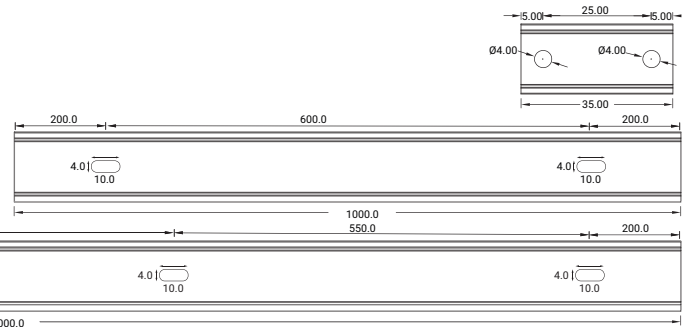
Installation Way



Surface Mounted



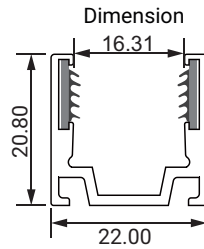
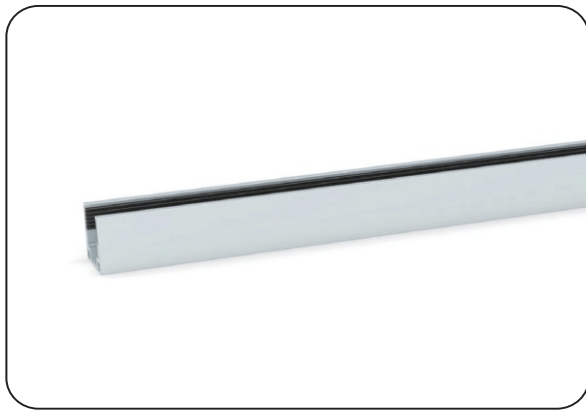
Recessed



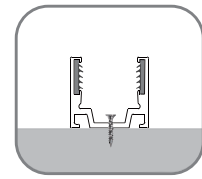
Model	W x H (mm)	Standard Length	Screw Holes	Holes Numbers
ALC16S02-035	20.40 x 19.60	35mm	Ø4.00mm	2
ALC16S02-100		1000mm	4.00mm	2
ALC16S02-200		2000mm	4.00mm	4

# LFX NEON SERIES 16 SPEC SHEET

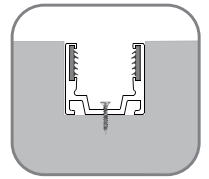
LFX-N-16 - MONO 24V



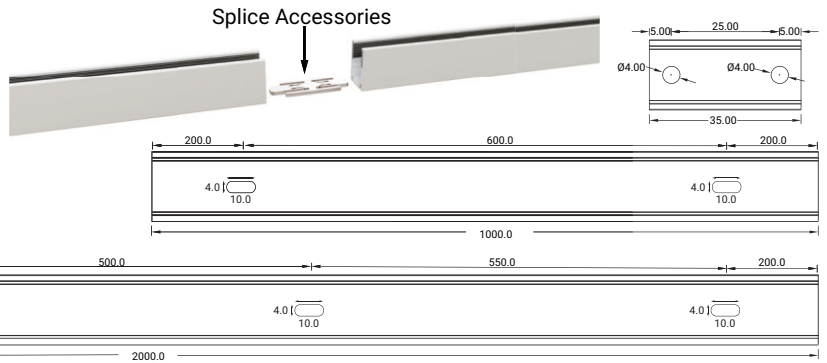
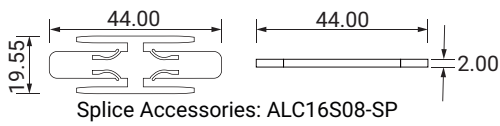
**Installation Way**



Surface Mounted



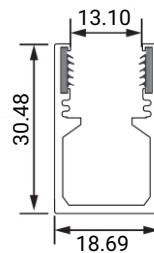
Recessed



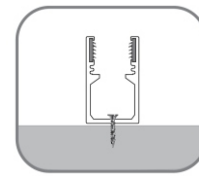
Model	W x H (mm)	Standard Length	Screw Holes	Holes Numbers
ALC16S08-035	22.00 x 20.80	35mm	Ø4.00mm	2
ALC16S08-100		1000mm	4.00mm	2
ALC16S08-200		2000mm	4.00mm	4



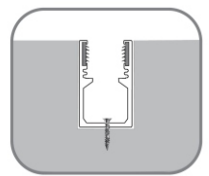
**Dimension**



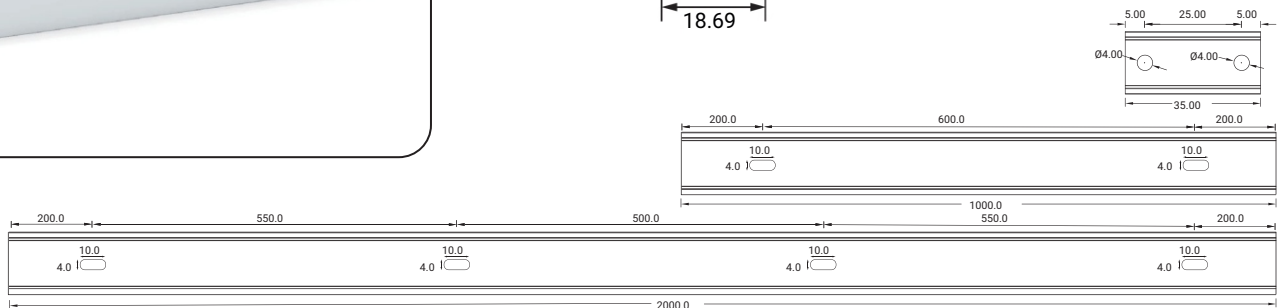
**Installation Way**



Surface Mounted



Recessed

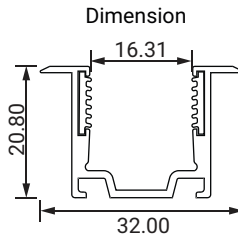


Model	W x H (mm)	Standard Length	Screw Holes	Holes Numbers
ALC10H02-035	18.69 x 30.48	35mm	Ø4.00mm	2
ALC10H02-100		1000mm	4.00mm	2
ALC10H02-200		2000mm	4.00mm	4

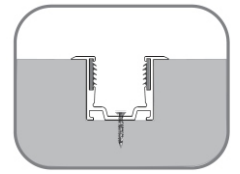


# LFX NEON SERIES 16 SPEC SHEET

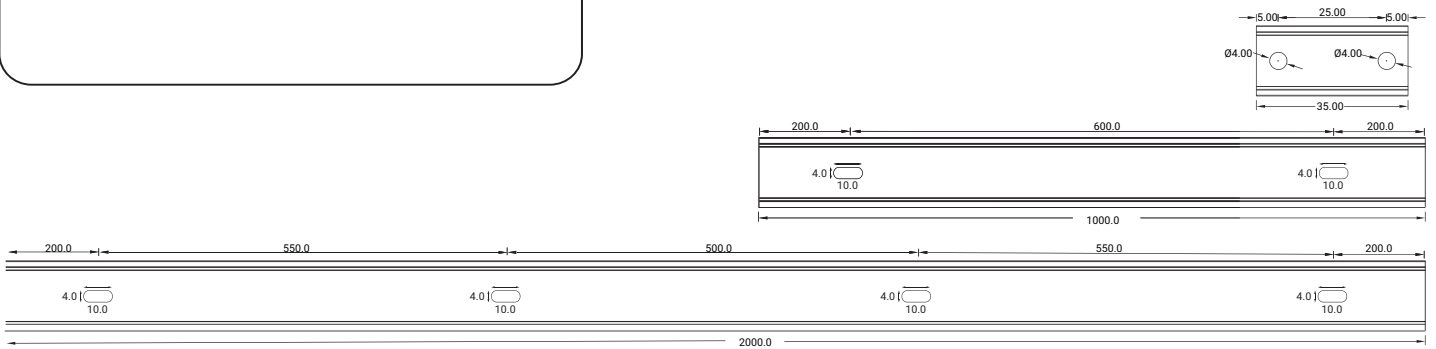
LFX-N-16 -MONO 24V



**Installation Way**



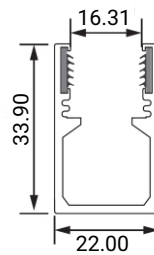
**Recessed**



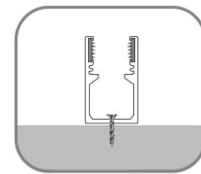
Model	W x H (mm)	Standard Length	Screw Holes	Holes Numbers
ALC16S07-035	32.00 x 20.80	35mm	Ø4.00mm	2
ALC16S07-100		1000mm	4.00mm	2
ALC16S07-200		2000mm	4.00mm	4



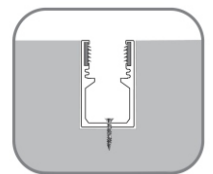
**Dimension**



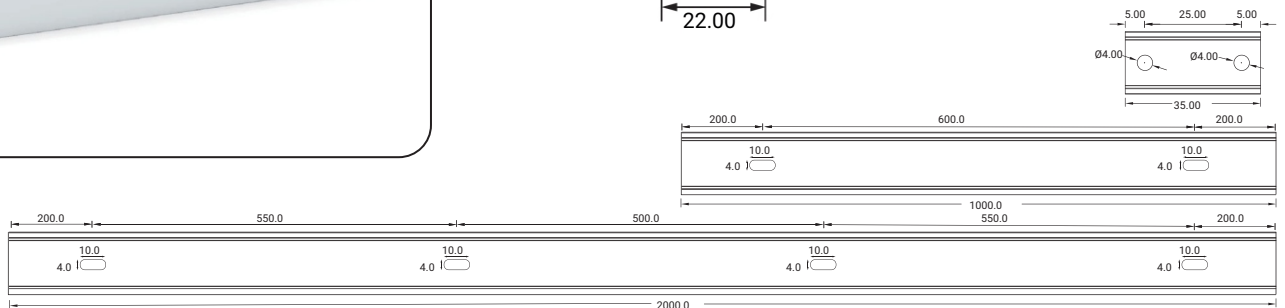
**Installation Way**



**Surface Mounted**



**Recessed**



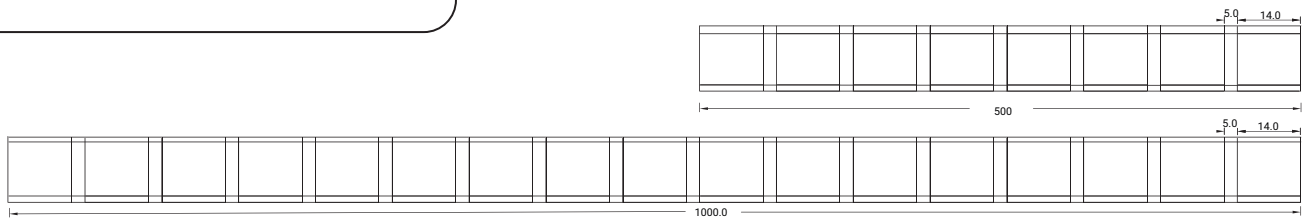
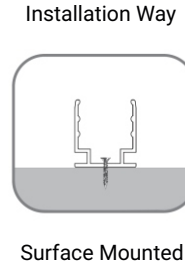
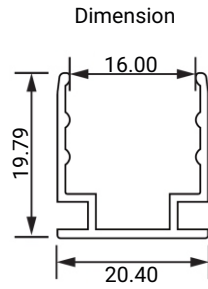
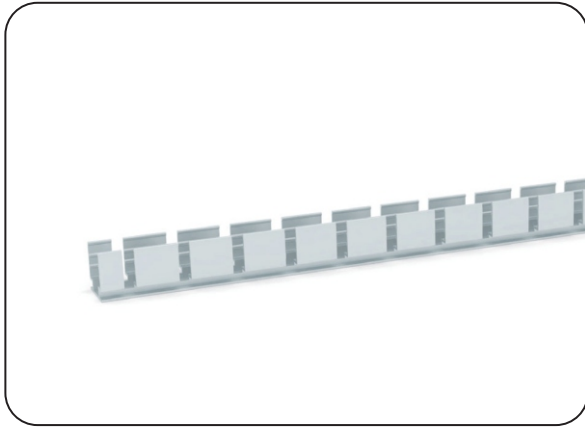
Model	W x H (mm)	Standard Length	Screw Holes	Holes Numbers
ALC16H02-035	22.00 x 33.90	35mm	Ø4.00mm	2
ALC16H02-100		1000mm	4.00mm	2
ALC16H02-200		2000mm	4.00mm	4

# LFX NEON SERIES 16 SPEC SHEET

LFX-N-16 - MONO 24V

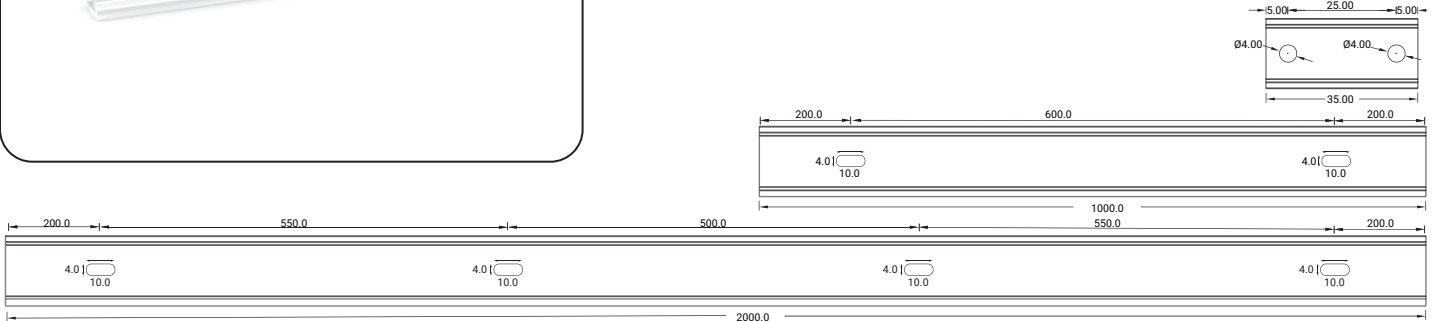
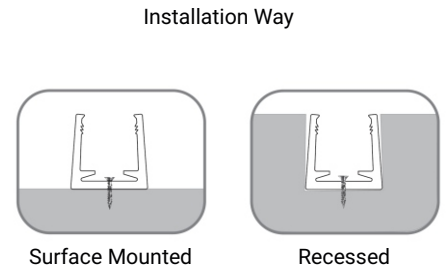
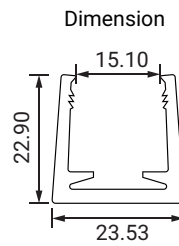


## FLEXIBLE ALUMINUM CHANNEL



Model	W x H (mm)	Standard Length
ALC16S02FLX05	20.40 x 19.79	500mm
ALC16S02FLX10		1000mm

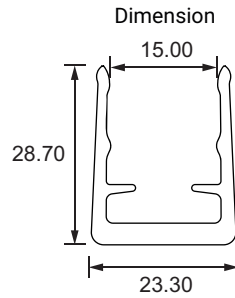
## PLASTIC CHANNEL



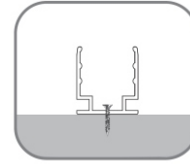
Model	W x H (mm)	Standard Length	Screw Holes	Holes Numbers
PC16/17S02-T-100	23.53 x 22.90	1000mm	Ø4.0mm	2

# LFX NEON SERIES 16 SPEC SHEET

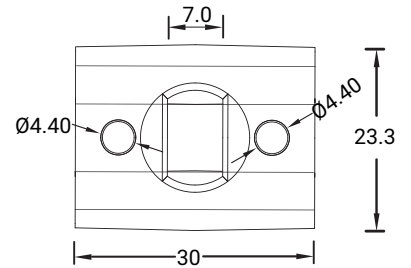
LFX-N-16 -MONO 24V



Installation Way

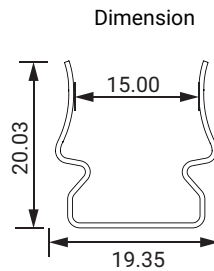
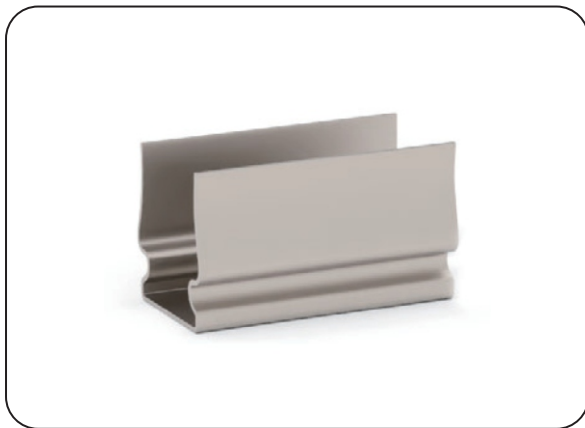


Surface Mounted

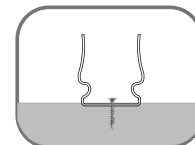


Model	W x H (mm)	Standard Length	Screw Holes	Holes Numbers
SJJ-ZSH-008-PC	23.30 x 28.70	30mm	Ø4.40mm	2

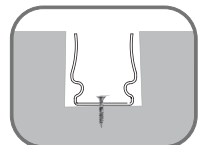
## STAINLESS STEEL CHANNEL



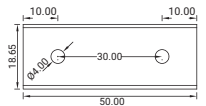
Installation Way



Surface Mounted



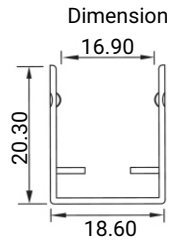
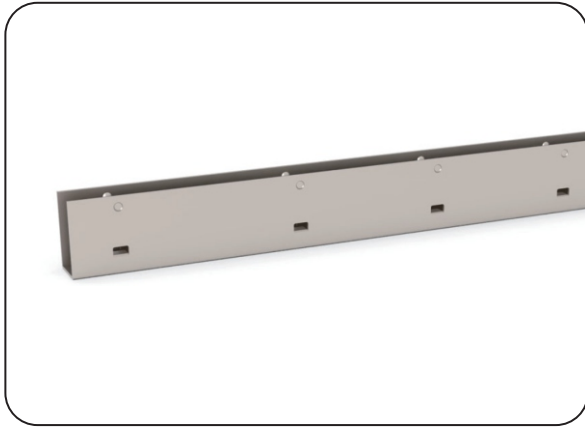
Recessed



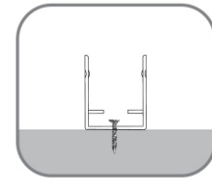
Model	W x H (mm)	Standard Length	Screw Holes	Holes Numbers
SSC16S01-05	19.35 x 20.03	50mm	Ø4.0mm	2

# LFX NEON SERIES 16 SPEC SHEET

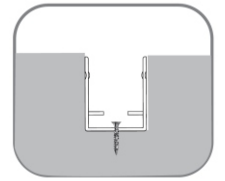
LFX-N-16 -MONO 24V



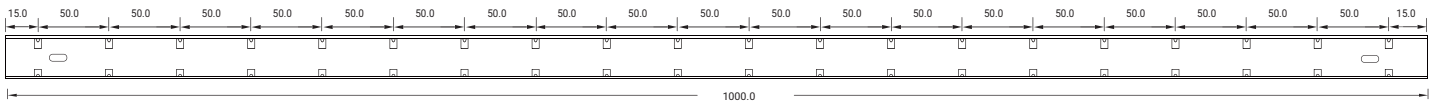
Installation Way



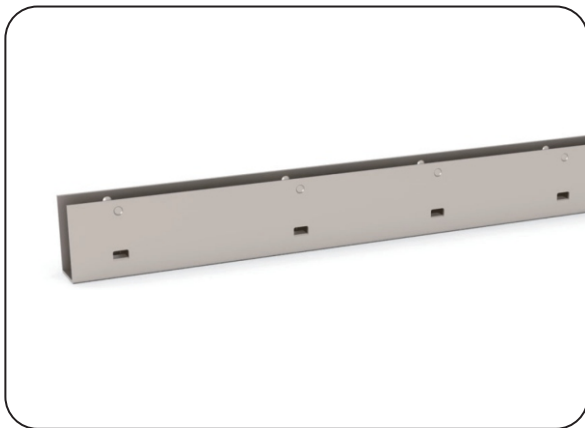
Surface Mounted



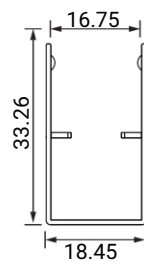
Recessed



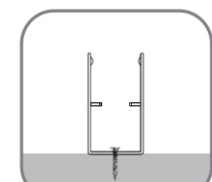
Model	W x H (mm)	Standard Length	Screw Holes	Holes Numbers
SSC16S02-100	18.60 x 20.30	1000mm	4.0 x 10mm	2



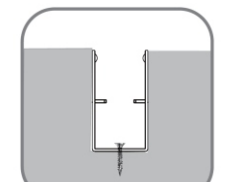
Dimension



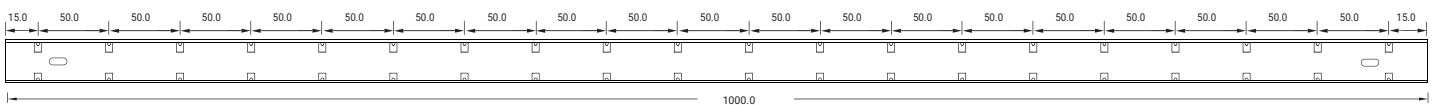
Installation Way



Surface Mounted



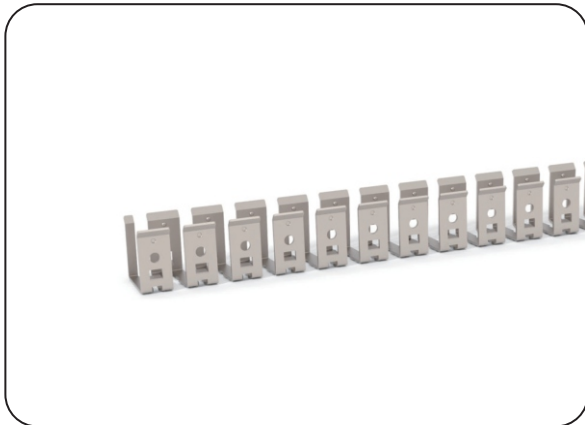
Recessed



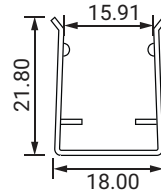
Model	W x H (mm)	Standard Length	Screw Holes	Holes Numbers
SSC16H01-100	18.45 x 33.26	1000mm	4.0 x 10mm	2

# LFX NEON SERIES 16 SPEC SHEET

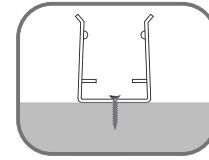
LFX-N-16 - MONO 24V



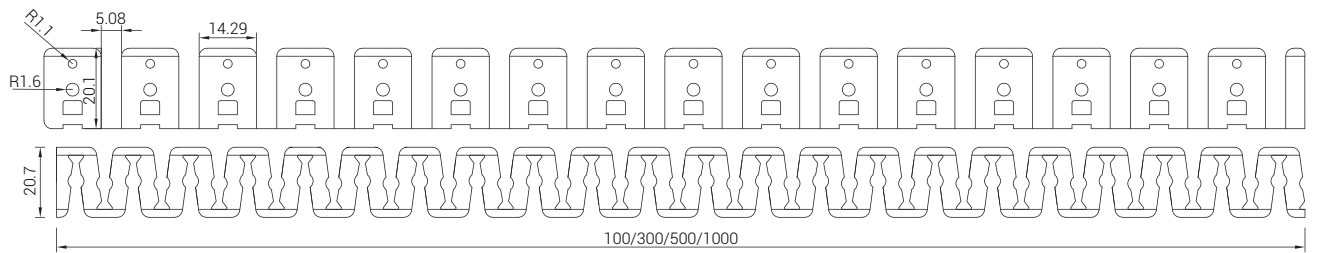
Dimension



Installation Way

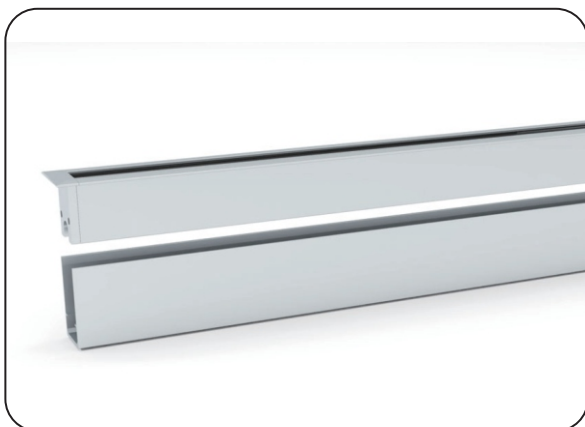


Surface Mounted

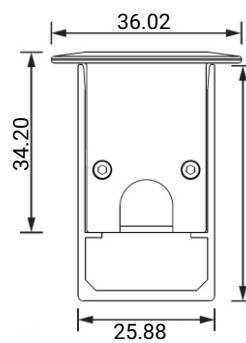


Model	W x H (mm)	Standard Length
SSC16FLX01	18.00 x 21.80	100mm
SSC16FLX03		300mm
SSC16FLX05		500mm
SSC16FLX10		1000mm

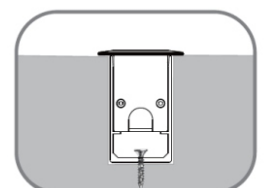
## BURIED AND RECESSED TYPE



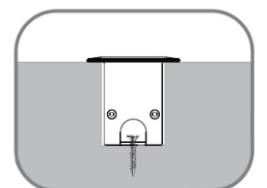
Dimension



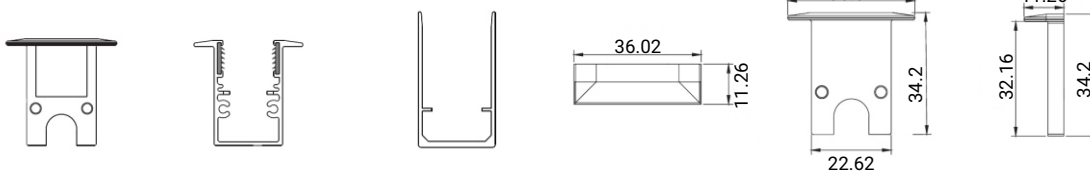
Installation Way



ALC-WL-B-02-A  
ALC-WL-B-02-B  
Buried Mounted

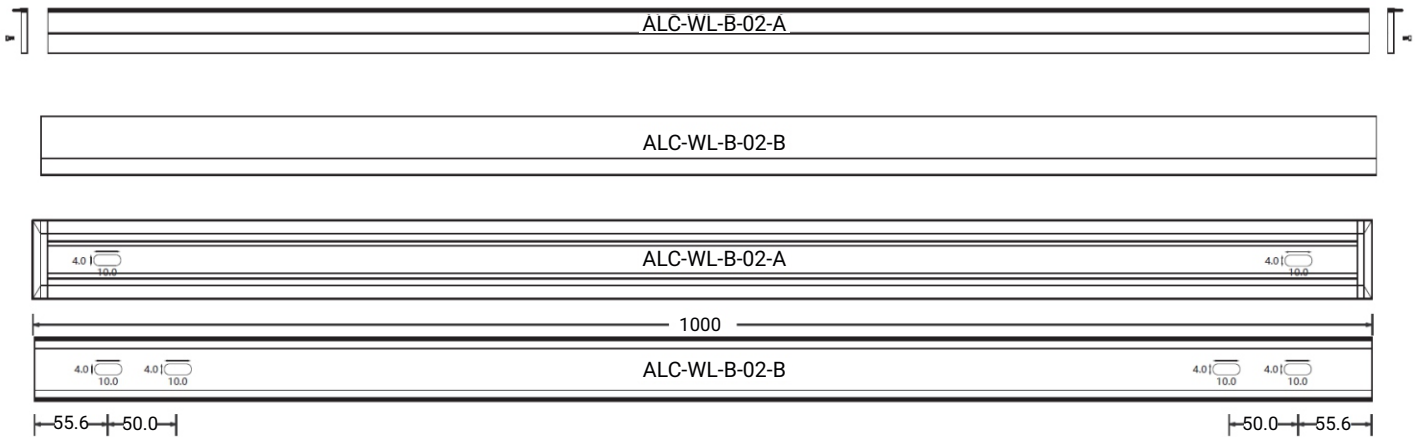
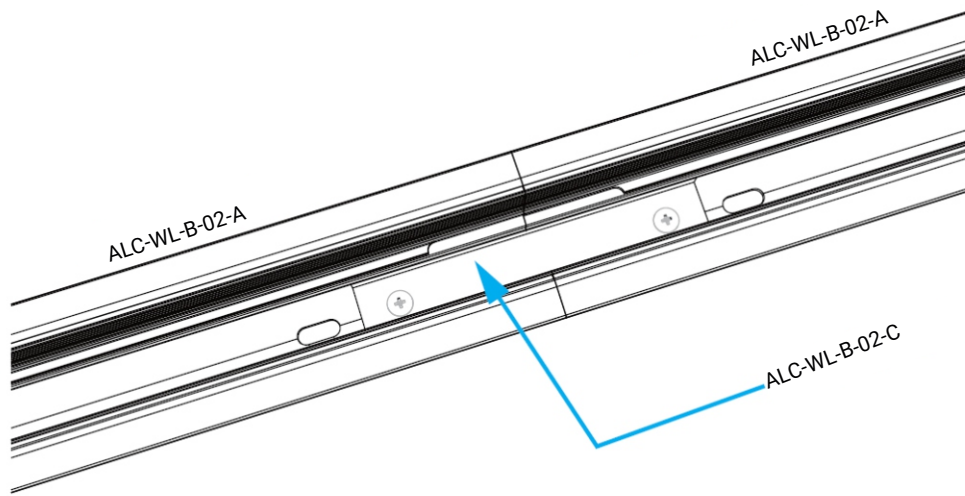
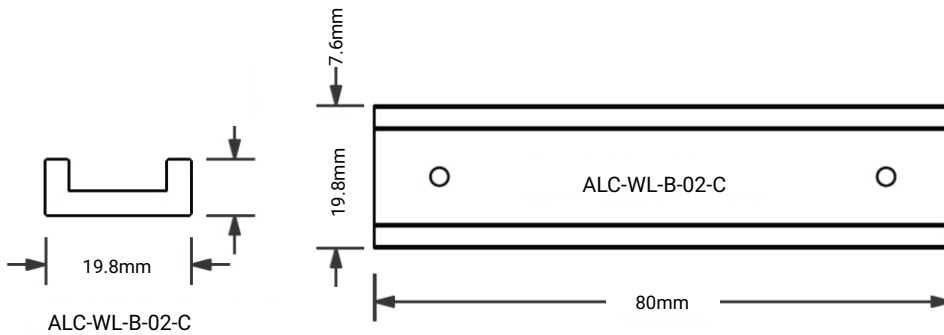


ALC-WL-B-02-A  
Recessed



# LFX NEON SERIES 16 SPEC SHEET

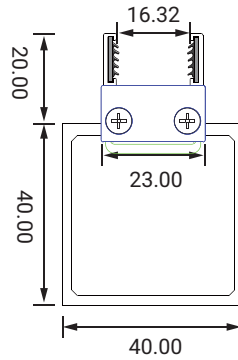
LFX-N-16 - MONO 24V



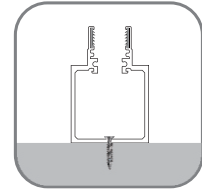
Model	W x H (mm)	Installation Way	Optional Length
ALC-WL-B-02-A	36.02 x 34.20	Recessed	500/1000/2000mm
ALC-WL-B-02-B	25.88 x 44.86	Buried Mounted	500/1000/2000mm
ALC-WL-B-02-C	19.8 x 7.6	Connective Accessories	80mm

# LFX NEON SERIES 16 SPEC SHEET

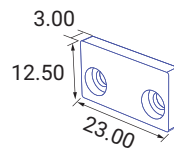
LFX-N-16 -MONO 24V



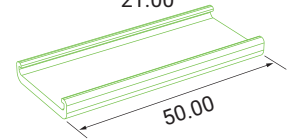
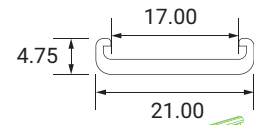
Installation Way



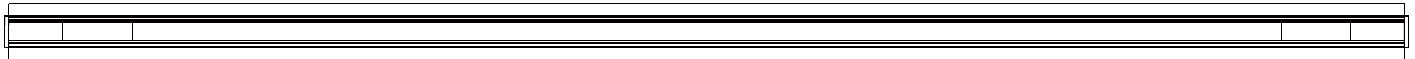
Surface Mounted



ALC-16H03-GZ  
Fixing Cap



ALC-16H03-GDB-50  
Connective Fixing Clips



Model	W x H (mm)	Installation Way	Optional Length
ALC16H03-100	40.00 x 60.00	Surface Mounted	1000/2000mm
ALC16H03-200		Surface Mounted	1000/2000mm