

OAKEN ROUND LARGE AC SPEC SHEET



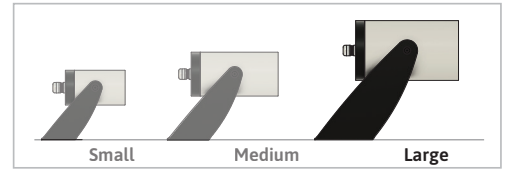
OAK-R-L-AC



IP66
WATER
PROOF



20W / 15W



The Oaken series LED spotlights are a practical and aesthetic solution for highlighting outdoor areas. They are available with five optic configurations, ultra narrow, narrow, medium, wide and ultra wide for flexibility. With a chemically sealed glass lens and proprietary moisture barriers, the luminaire is capable of withstanding extreme outdoor conditions with consistent performance.

SPECIFICATION

	20W	15W
OPERATING VOLTAGE	120 - 277 VAC	
OPERATING TEMPERATURE	-20°C to + 50°C	
CRI	80, 90* (* = special order)	
CONTROL	0-10 V Dimmable	
INPUT CURRENT @115 VAC, 60Hz	173 mA	128 mA
INPUT CURRENT @230 VAC, 50Hz	87 mA	67 mA
NO OF LED	1	
LIGHT SOURCE	Cree COB	
CCT	2200K, 2700K, 3000K, 3500K, 4000K, 5000K	
BEAM ANGLE	13°, 21°, 30°, 44°, 52°	
FIXTURE CONNECTION	Pigtail	
AVAILABLE IP RATING	IP66	



Cree COB
LED Source

120 - 277 VAC
Operating Voltage

20W, 15W
Rated power

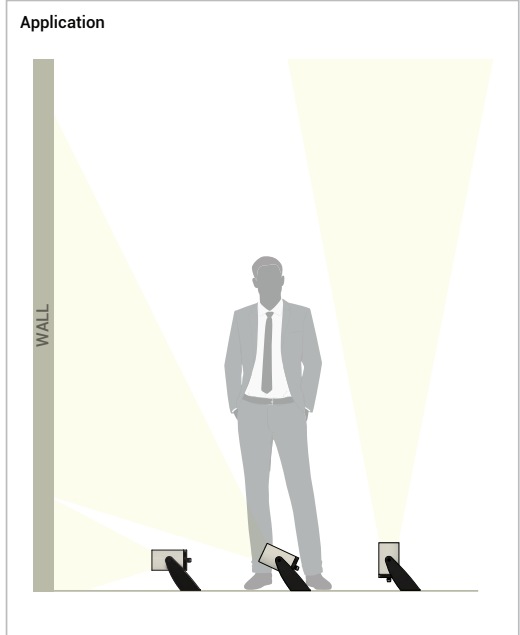
*" represent special order, please contact factory for detail.

OPTICAL DATA (3000K)

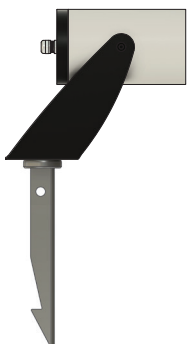
Beam Angle	20W	15W
13° Ultra Narrow	1509 lm	1132 lm
21° Narrow	1582 lm	1187 lm
30° Medium	1462lm	1097 lm
44° Wide	1445 lm	1084 lm
52° Ultra Wide	1444 lm	1083 lm

DELIVERED LUMENS BY CCT (Narrow beam 21°)

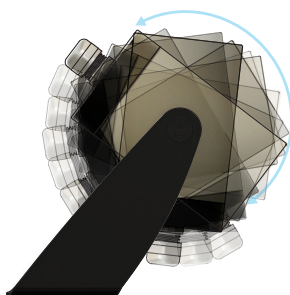
White	20W	15W
2200K	1280 lm	961 lm
2700K	1483 lm	1113 lm
3000K	1582 lm	1187 lm
3500K	1587 lm	1191 lm
4000K	1554 lm	1166 lm
5000K	1547 lm	1161 lm



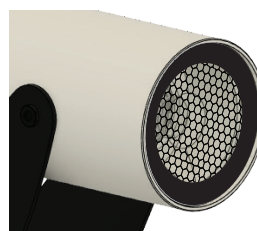
Spike Mount



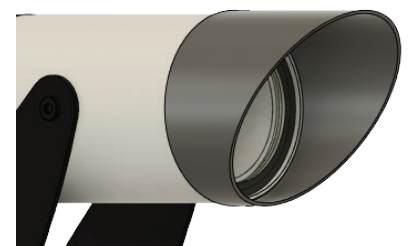
180° Angle Swivel Base



Honeycomb Louver (Optional)



Visor (Optional)



OAKEN ROUND LARGE AC SPEC SHEET



OAK-R-L-AC

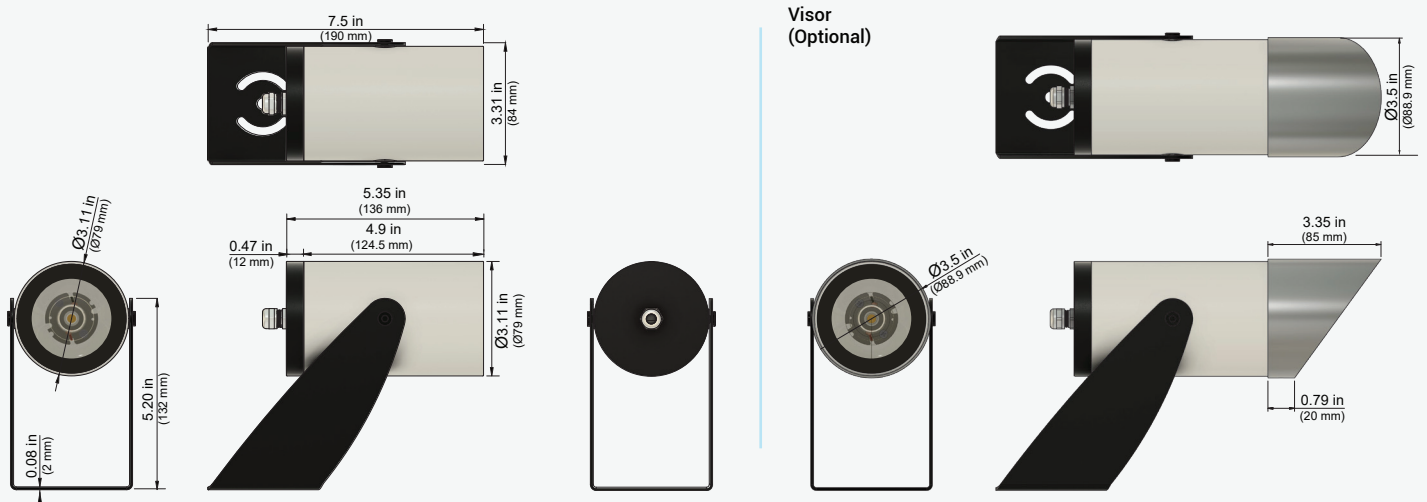
ORDERING CODE

PRODUCT SERIES	TYPE	SIZE	POWER	COLOR TEMPERATURE	CRI	BEAM ANGLE	CONTROL	MOUNTING	VOLTAGE	ACCESSORIES
OAK - Oaken	R - Round	L - Large	15W - 15 Watts 20W - 20 Watts	CT22 - 2200K CT27 - 2700K CT30 - 3000K CT35 - 3500K CT40 - 4000K CT50 - 5000K	80 - 90 90* - 90*	13D - 13 Degree 21D - 21 Degree 30D - 30 Degree 44D - 44 Degree 52D - 52 Degree	SW - Switched TRI - TRIAC	SM - Surface Mount SP - Spike Mount	AC - 120-277 VAC	N - None H - Honeycomb V - Visor

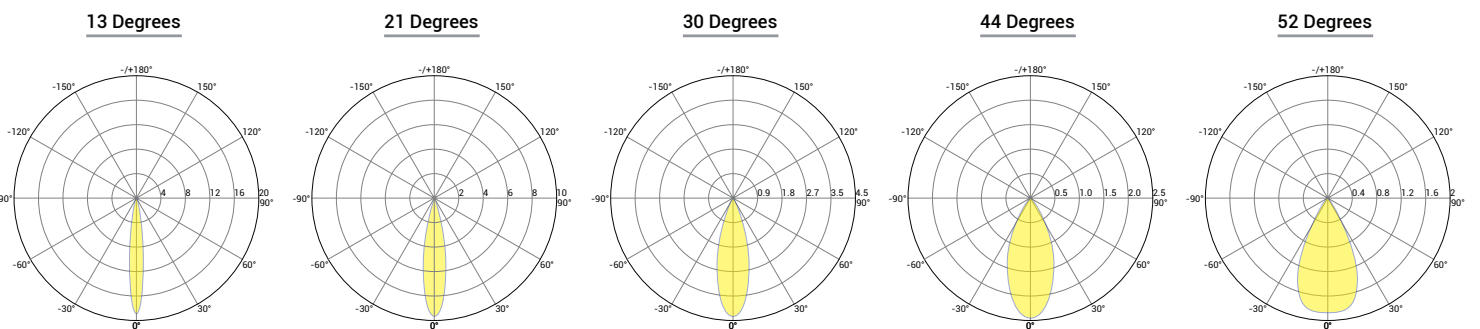
FIXTURE FINISHING	
BODY FINISH	TRIM FINISH
BWH - White	TWH - White
BBL - Black	TBL - Black
BSL - Silver	TSL - Silver
BXX - Custom	TGD - Gold
	TXX - Custom

Sample: OAK-R-L-20W-CT22-80-13D-SW-SM-AC-H-BWH-TBL

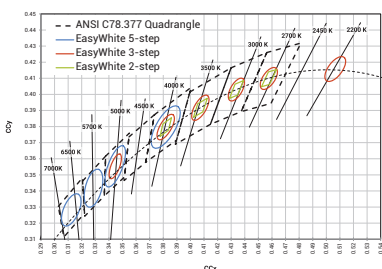
DIMENSIONS



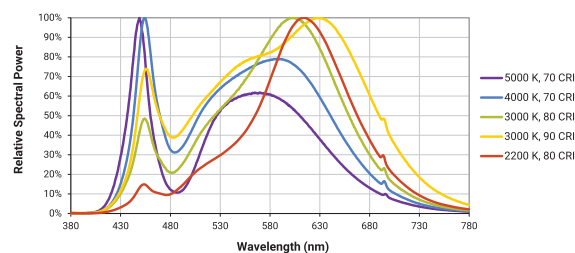
PHOTOMETRIC DATA



BIN Details (CIE 1931)



Spectral Distribution



RELATED PRODUCTS

OAK - Round Large - DC

