

LFX COB SERIES SPEC SHEET

LFX-19W-COB-784

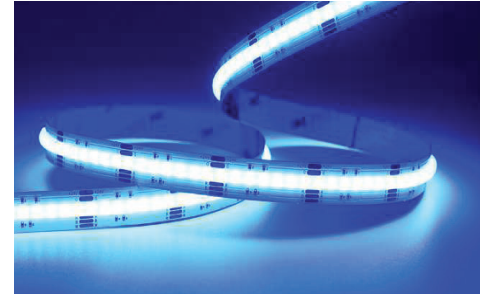


3M IP20/65/68
TAPE INGRESS PROTECTION



CE 19W

The YYZ LFX COB Series delivers uniform, homogeneous lighting with no visible light points. Featuring COB technology, the LEDs are fully encapsulated to minimize thermal resistance, enhance LED lifespan, and ensure high light flux density. This design reduces glare and provides consistent, even illumination. Ideal for indirect lighting applications, it is well-suited for use in offices, residential spaces, furniture, and any setting requiring expansive, uniform lighting surfaces. As an RGBW fixture, it offers full-color customization for dynamic and versatile lighting effects.



SPECIFICATION

OPERATING VOLTAGE	24V DC
POWER	5.79W/ft (19W/m)
LED COUNT	239LEDs/ft (784LEDs/m)
CUTTING UNIT	11 LEDs
CUTTING LENGTH	2.81"/71.4mm
COLOR	RGBW
CONTROL	DMX
LENGTH/REEL	16.4ft (5m)
BEAM ANGLE	180°
OPERATING TEMP	-40°C to 55°C
IP RATING	IP20/65/68
WARRANTY	2 years

V 24V DC
Operating Voltage

W 19w/m
Rated power

3M Tape on the back
Mounting

LUMENS (RGBW)

RED	49lm/ft (160lm/m)
GREEN	127lm/ft (415lm/m)
BLUE	26lm/ft (85lm/m)
WHITE	148lm/ft (485lm/m)

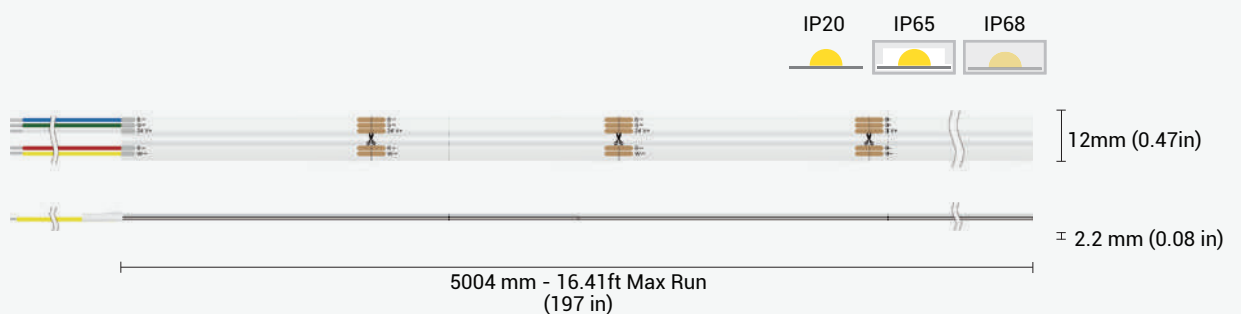
ORDERING CODE

PRODUCT SERIES	LOCATION	POWER	COLOR	LED TYPE	BIN	LED QTY	VOLTAGE	CC / CV	PCB Width	CRI	LED ROWS	CONNECTION
LFX - Linear Flex	I - Indoor (IP20) O - Outdoor (IP65/67) U - Underwater (IP68)	19W	RGBW	COB	Z3 - High End 3 Step	784 - 784LEDs	24 - 24V	CC-Constant Current	12 - 12mm	N-80+	1-Single	HT - Hard Wire Tail OC - Outdoor Connector

MODEL DESIGNATION	CLASSIFICATION COLOR CONTROL	LIGHT EMITTING DIRECTION	LED POWER	PCB COLOR	LENGTH PER REEL
R - Regular	M - Monochrome	T - Top Emitting	H - High	W - White	L05 - 5 meters

Sample: LFX - I - 19W - RGBW - COB - Z3 - 784 - 24 - CC - 12 - N - 1 - HT - RMTHWL05

DIMENSIONS



LFX COB SERIES SPEC SHEET

LFX-21W-COB-840

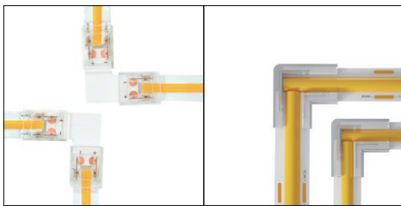


CONNECTORS

RGB

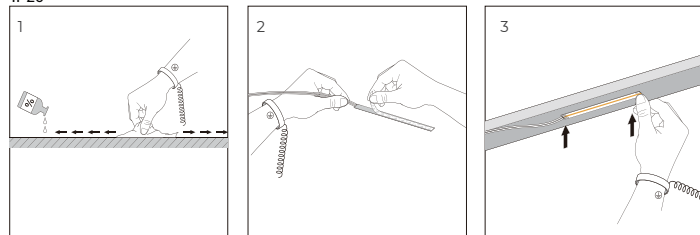
Series	Product			PCB Width	Product NO.
	BB PCB TO PCB	XB Cable to PCB	BXB PCB TO Cable to PCB		
LFX-COB Series Maximum Voltage: 36V Maximum Current: 5A				10mm	COB3/4P-C10BB-G1 COB4P-10XB-G1 COB4P-C10MBXB-G1
LFX-COB Series Maximum Voltage: 36V Maximum Current: 5A			N/A	10mm	COB4P-C10BB SMD4P-C10BB COB4P-C10XB

L-Corner

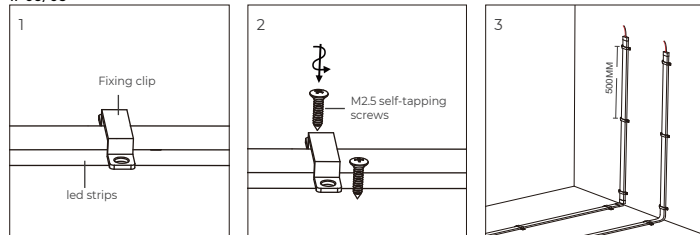


INSTALLATION

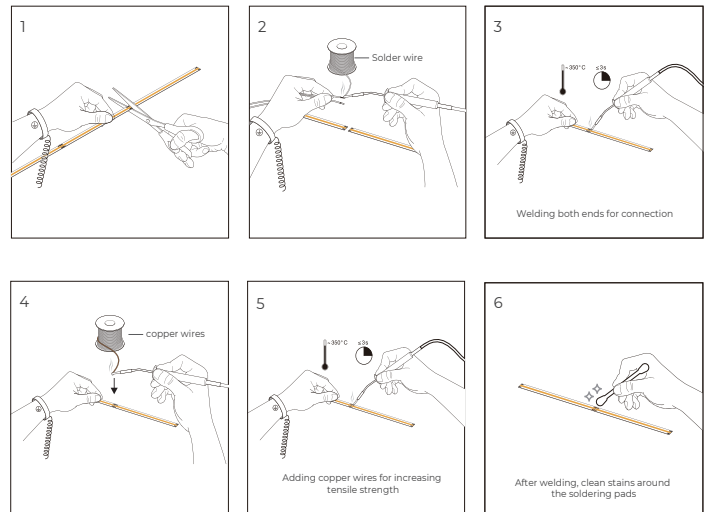
IP20



IP65/68



CUTTING



APPLICATION NOTE

