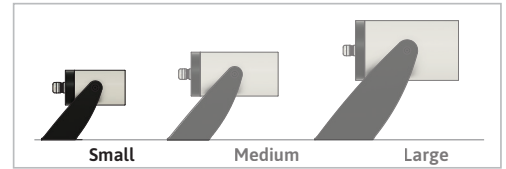


OAKEN ROUND SMALL AC SPEC SHEET



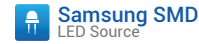
OAK-R-S-AC



The Oaken series LED spotlights are a practical and aesthetic solution for highlighting outdoor areas. They are available with three optic configurations, narrow, medium and wide, for flexibility. With a chemically sealed glass lens and proprietary moisture barriers, the luminaire is capable of withstanding extreme outdoor conditions with consistent performance.

SPECIFICATION

	5W	3W
OPERATING VOLTAGE	100 - 264 VAC	
OPERATING TEMPERATURE	-20°C to + 50°C	
CRI	80	
CONTROL	Switched	
INPUT CURRENT @115 VAC, 60Hz	66 mA	50 mA
INPUT CURRENT @230 VAC, 50Hz	39 mA	29 mA
NO OF LED	1	
LIGHT SOURCE	Samsung SMD	
CCT	2700K, 3000K, 3500K, 4000K	
BEAM ANGLE	15°, 23°, 34°	
FIXTURE CONNECTION	Pigtail	
AVAILABLE IP RATING	IP66	

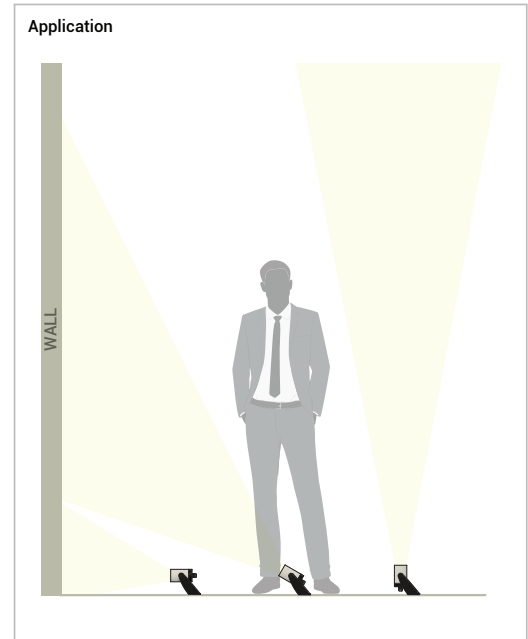


OPTICAL DATA (3000K)

Beam Angle	5W	3W
15°	310 lm	186 lm
23°	270 lm	162 lm
34°	280 lm	168 lm

DELIVERED LUMENS BY CCT (Narrow beam 15°)

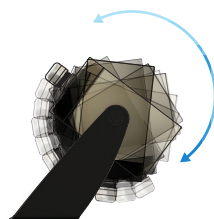
White	5W	3W
2700K	290 lm	174 lm
3000K	310 lm	186 lm
3500K	312 lm	187 lm
4000K	303 lm	182 lm



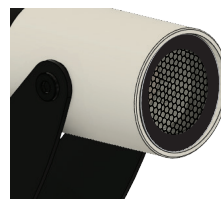
Spike Mount



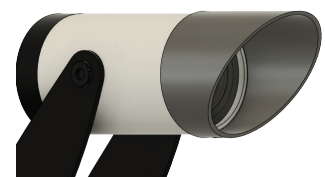
180° Angle Swivel Base



Honeycomb Louver (Optional)



Visor (Optional)



OAKEN ROUND SMALL AC SPEC SHEET

OAK-R-S-AC



ORDERING CODE

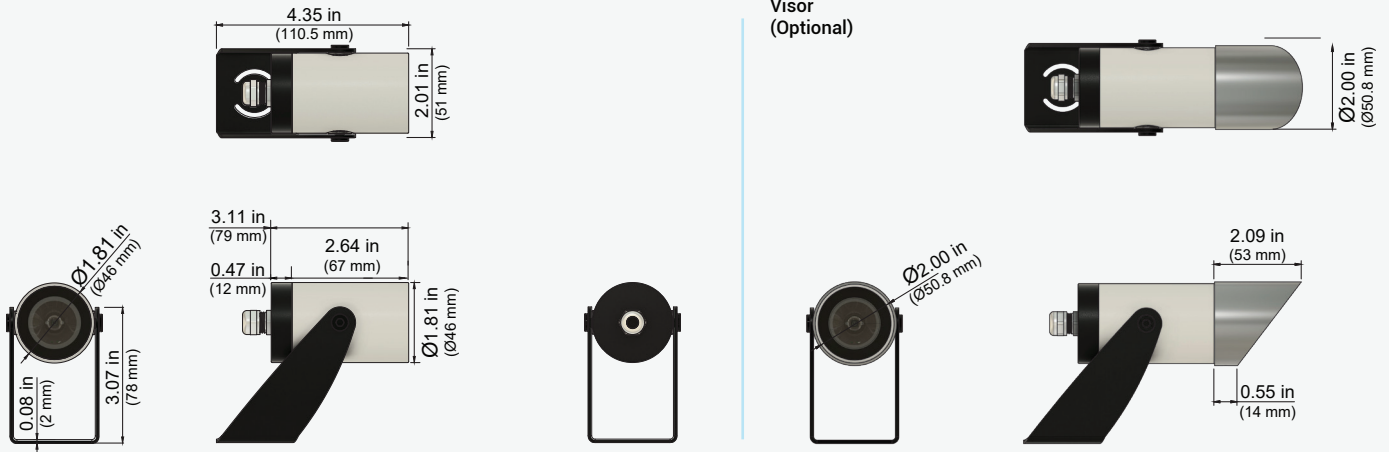
PRODUCT SERIES	TYPE	SIZE	POWER	COLOR TEMPERATURE	BEAM ANGLE	MOUNTING	VOLTAGE	ACCESSORIES
OAK - Oaken	R - Round	S - Small	3W - 3 Watts 5W - 5 Watts	CT27 - 2700K CT30 - 3000K CT35 - 3500K CT40 - 4000K	15D - 15 Degree 23D - 23 Degree 34D - 34 Degree	SM - Surface Mount SP - Spike Mount	AC - 100-264 VAC	N - None H - Honeycomb V - Visor

FIXTURE FINISHING

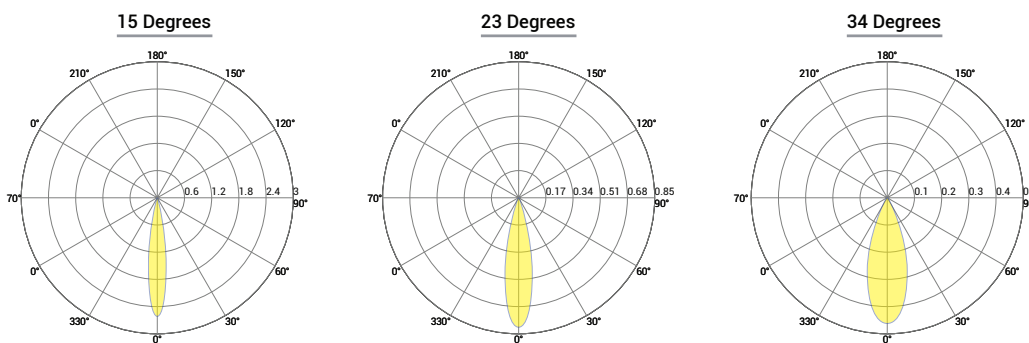
BODY FINISH		TRIM FINISH	
BWH - White	TWH - White	TBL - Black	TSL - Silver
BBL - Black	TBL - Black	TGL - Gold	TCM - Custom
BSL - Silver	TSL - Silver		
BCM - Custom	TGL - Gold		
	TCM - Custom		

Sample: OAK-R-S-5W-CT27-15D-SM-AC-H-BWH-TBL

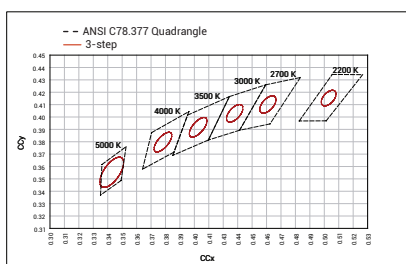
DIMENSIONS



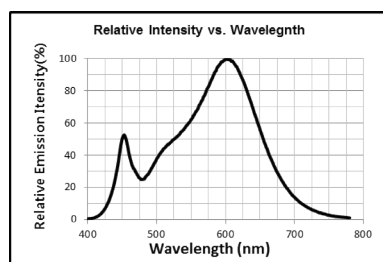
PHOTOMETRIC DATA



BIN Details (CIE 1931)



Spectral Radiant Flux VS Wavelength



RELATED PRODUCTS

OAK - Round Small - DC

