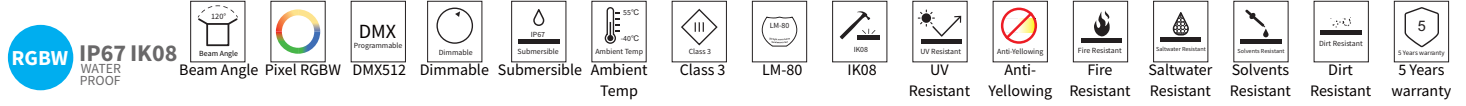


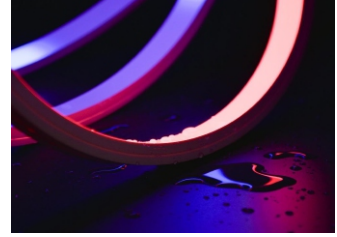
LFX NEON SERIES



LFX-1414-VB-RGBW-DMX-PIXEL CHASING (Vertical Bending Version)



YYZ LFX Neon series is designed to provide a very bright, crisp consistent and homogenized illumination that will accentuate any building, structure, or artistic flourish. Using high brightness surface mounted LEDs, behind a first-class eco-friendly UV-resistant Silicone polymer encapsulated flexible chamber material, the LFX Neon will provide your project with bright, consistent traces of light in RGBW Pixel Chasing. The fixture consists of uniform and even lighting with no LED hotspot. LFX Neon has a transverse minimum radius of 120mm and is vertical bendable. Easy to install, can be cut and reconnected with IP68 protected connector. The product is supplied in 5m standard rolls or custom as needed.



FEATURES

LIGHT SOURCE	Lumileds SMD LED 5050
WORKING VOLTAGE	DC 24V
RATED POWER	12W/m
LED QUANTITY	60 Leds / m
RADIANCE ANGLE	120°
LAMP LIFE	70,000 Hours L70@25°C 50,000 Hours L70@50°C
MOUNTING	Mounting clip / chanel
CONNECTION	Outdoor rated connections
CUTTING INCREMENTS	100mm (1 Unit)
MINIMUM BEND DIAMETER	200mm
DIMENSIONS	14mm(W) x 14mm(H)
OPERATING TEMP	-40° C - +55° C
STORAGE TEMP	-20° C - +55° C
CONTINUOUS LENGTH	5mtr
WORKING MODE	DMX512
PIXEL QUANTITY	10 Pixel per meter
IP RATING	IP67 Wet location

- LUMILEDS LED Quality
- 24 V DC Working Voltage
- 12W/m Rated power

ELECTRICAL DATA

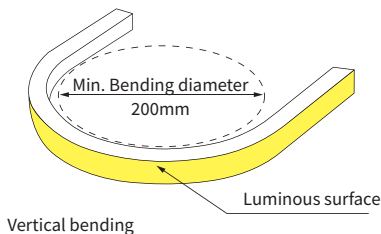
POWER CONSUMPTION	12W/m
SUPPLY VOLTAGE	DC 24 V
COLORS	RGBW
LUMEN	300lm/m

ORDERING LOGIC

PRODUCT	POWER	COLOR TEMPERATURE
LFX 1414-VB-PXL	12 - 12 W	(RGBW) - RGBW

Sample: LFX 1414-VB-PXL - 12 - RGBW

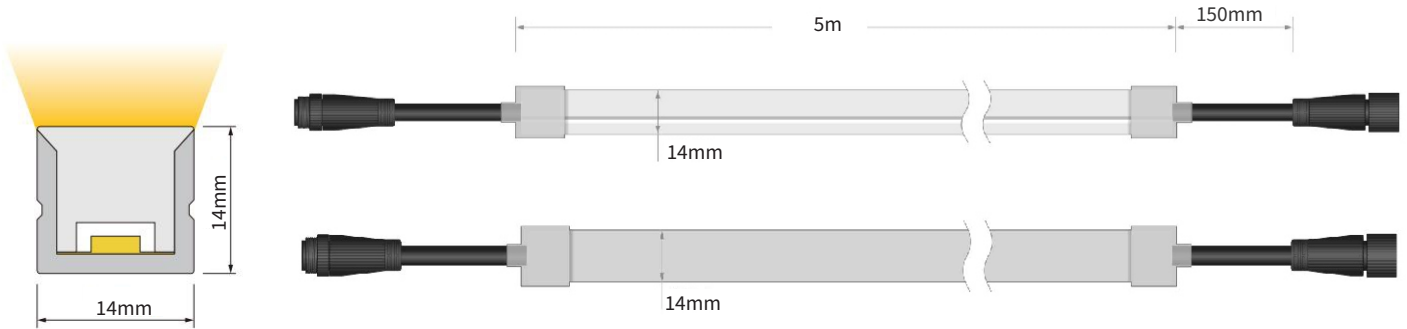
BENDING DETAILS



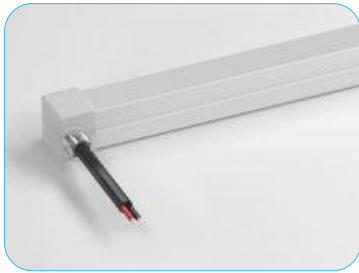
LFX NEON SERIES

LFX-1414-VB-RGBW-DMX-PIXEL CHASING (Vertical Bending Version)

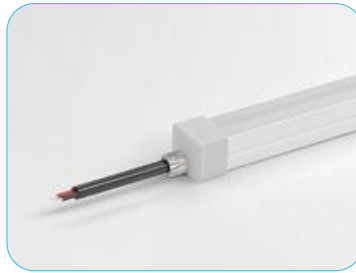
DIMENSION



TYPES OF CABLE ENTRY



Side Cable Entry

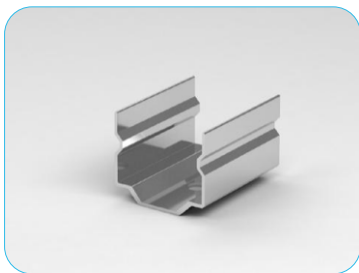


Front Cable Entry



Bottom Cable Entry

ACCESSORIES



Mounting Clip



Aluminum Profile



Flexible Aluminum profile