

INDOOR LED STRIP DIM2 WARM FLEX SERIES

LFX-I-9.6-CTWD-1828-Z9-168-24-CV-10-H-1-HT-R-M-T-L-W-L05



3M TAPE
IP20
NON-WATER PROOF



CE **9.6W**

Our LFX series flexible linear LED light strips is a simple, effective solution for a wide range of lighting applications where crisp, single color light is desired. Ideal for indirect accent lighting, as well as a store fixtures, display cases, steps and stairwells, furniture, kitchen and cabinet lighting, along with other task and specialty applications.

FEATURES

| | |
|--------------------|---------------------|
| LIGHT SOURCE | 1828 LED |
| LED QUANTITY | 168 LEDS / m |
| FINISH | WHITE PCB |
| WORKING VOLTAGE | 24 V DC |
| RATED CURRENT | 200mA |
| RATED POWER | 9.6W / m |
| RADIANCE ANGLE | 120° |
| LAMP LIFE | 50000 HRS |
| MOUNTING | 3M TAPE ON THE BACK |
| CONNECTION | HARDWIRED TAILS |
| CUTTING INCREMENTS | EVERY 83.33 mm |
| DIMENSIONS | 10mm X 5000mm(PCB) |
| MAX DAISY RUN | 5 m |

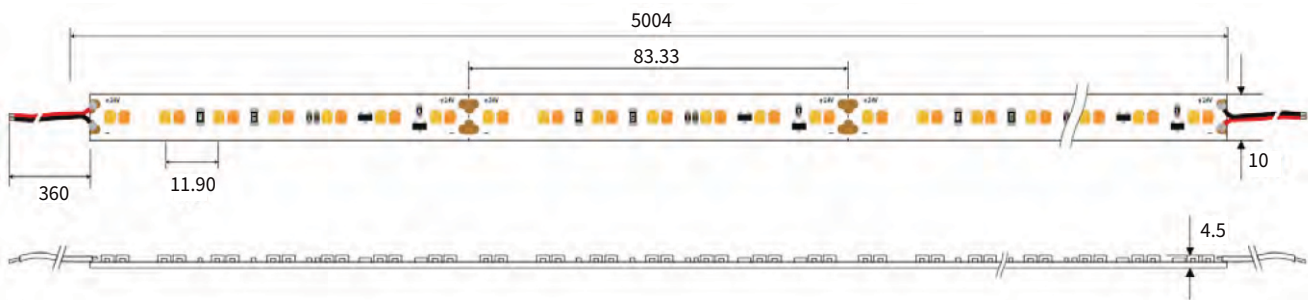


- CREE**
LED Quality
- 24V DC**
Working Voltage
- 9.6W / m**
Rated power
- 3M Tape on the back**
Mounting

ELECTRICAL DATA

| | |
|-------------------|------------|
| POWER CONSUMPTION | 9.6W |
| SUPPLY VOLTAGE | 24 V DC |
| SUPPLY CURRENT | 200mA |
| COLORS | 1800-3000K |
| LEDS / 3.3FT | 168 |

DIMENSIONS



ORDERING LOGIC

| PRODUCT SERIES | TYPE | POWER | COLOR TEMPERATURE | LED TYPE | BIN | NO. OF LED | VOLTAGE | CIRCUIT | WIDTH | CRI | NO OF LED ROWS | CONNECTION | | | | | | | | | | | | |
|--|-------------------|--------------------------|-------------------|-----------|-----------------|--------------------|---------|---------------------|-----------|---------------|----------------|--|-------|---------------|--------------------------|-----------|-----------|-----------------|-------------|----------|---------|---------|-----------|------------|
| LFX | I - Indoor (IP20) | 9.6 - 9.6W | (CTWD) 1800-3000K | 1828 | Z9 | 168 - 168 LEDs/mtr | 24-24V | CV-Constant voltage | 10 - 10mm | H - High (90) | 1 | HT - Hardwired Tai OC - Outdoor Connector | | | | | | | | | | | | |
| <table border="1"> <thead> <tr> <th>MODEL</th> <th>COLOR CONTROL</th> <th>LIGHT EMITTING DIRECTION</th> <th>LED POWER</th> <th>PCB COLOR</th> <th>LENGTH PER REEL</th> </tr> </thead> <tbody> <tr> <td>R - Regular</td> <td>M - Mono</td> <td>T - Top</td> <td>L - Low</td> <td>W - White</td> <td>L05 - 5mtr</td> </tr> </tbody> </table> | | | | | | | | | | | | | MODEL | COLOR CONTROL | LIGHT EMITTING DIRECTION | LED POWER | PCB COLOR | LENGTH PER REEL | R - Regular | M - Mono | T - Top | L - Low | W - White | L05 - 5mtr |
| MODEL | COLOR CONTROL | LIGHT EMITTING DIRECTION | LED POWER | PCB COLOR | LENGTH PER REEL | | | | | | | | | | | | | | | | | | | |
| R - Regular | M - Mono | T - Top | L - Low | W - White | L05 - 5mtr | | | | | | | | | | | | | | | | | | | |
| Sample: LFX-I-9.6-CTWD-1828-Z9-168-24-CV-10-H-1-HT-R-M-T-L-W-L05 | | | | | | | | | | | | | | | | | | | | | | | | |