

VERTEX FLEX-Y22A-VB-RGB-24V



YYZ Vertex flex is designed to provide a very bright, crisp consistent and homogenized illumination that will accentuate any building, structure or artistic flourish. Using 84 high brightness surface mounted LEDs/meter, behind a first class eco-friendly UV-resistant PVC encapsulated flexible chamber material, it helps to provide bright, consistent traces of light in 10 shades of white, single colors of red, green and blue. The fixture consists of uniform and even lighting with no Led hotspot and has a transverse minimum diameter of 30cm. It is easy to be installed, can be cut and re connected with IP68 protected connector. Connectors at both ends offer ease of installation and is supplied in 5m standard rolls-or custom. Operating at 24V, the Vertex Flex features on-board constant-current drive topology, which ensures consistent brightness along the entire run, precise drive current, and long life expectancy. Dimming is achieved with YYZ's dimming compatible power supplies. Two power levels and two control types are also available.



FEATURES

LED QUANTITY	84 Leds / mtr
FINISH	PVC Encapsulated flexible chamber material
WORKING VOLTAGE	24 Volts
RATED POWER	12W
RADIANCE ANGLE	120°
LAMP LIFE	50000 hrs
MOUNTING	Mounting clip / Chanel
CONNECTION	Outdoor rated connections
CUTTING INCREMENTS	83.3mm (1Unit)
DIMENSIONS	17(H) x 16(W)
OPERATION TEMP	-20° C - +50° C
STORAGE TEMP	-20° C - +60° C
WEIGHT	0.350 kg/mtr
CONTINUOUS LENGTH	7mtr

- 84 LEDs / mtr
LED Quality
- 24 VOLTS
Working Voltage
- 12 W / mtr
Rated power

ELECTRICAL DATA

POWER CONSUMPTION	12W
SUPPLY VOLTAGE	24 Volts
COLORS	RGB
CRI	80+
LEDS / 3.3FT	84

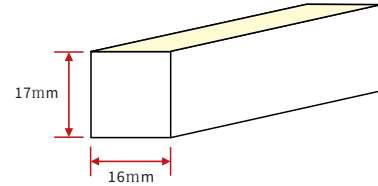
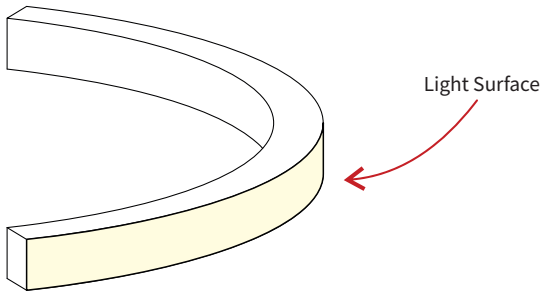
ORDERING LOGIC

PRODUCT	CONTROL	COLOR TEMPARTURE	VOLTAGE	FIXTURE LENGTH	MOUNTING	CONNECTION	CUSTOM
VERTEX FLEX Y22A -VB-RGB-24V (VTF Y22A-VB)	DMX - DMX CONTROL	(CT RGB) RGB	24 (24 VDC)	7 - 7Mtr (####) CUSTOM	CLP - Clip CHL - Chanel	OC - Outdoor Connector	xx

(Order Extrusion and End cap as per site requirement)

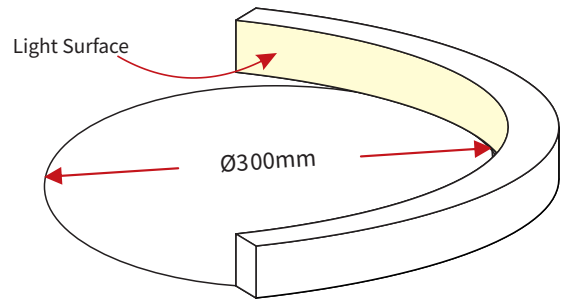
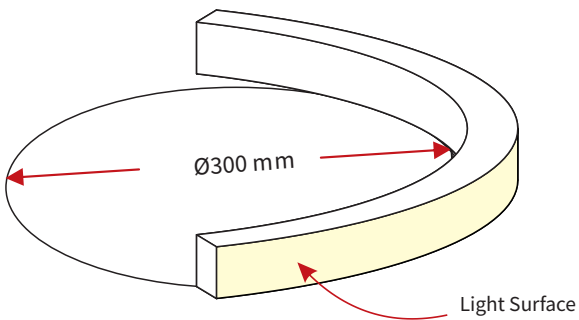
Sample: VTF Y22A-VB - DMX - CT RGB - 24 - 7 - CLP - OC - XX

DIMENSION



Note: Unless otherwise stated, the tolerance of the light is $\pm 0.3\text{mm}$.

BENDING DETAILS



The light can only be bent along the light surface. Do not bend smaller than allowed minimum bend diameter.

TYPES OF CONNECTOR

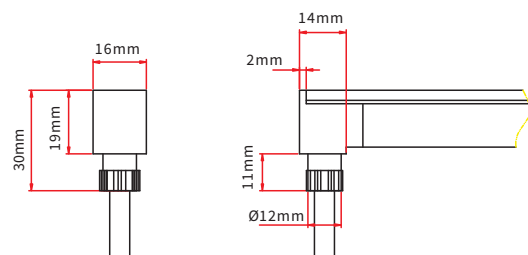
INJECTION-MOULDED CONNECTOR

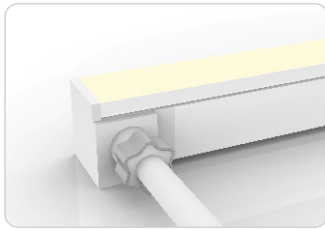
Note: Unless otherwise stated, the tolerance of the connector is $\pm 0.5\text{mm}$.



INJECTION-MOULDED FRONT CONNECTOR (BOTTOM)

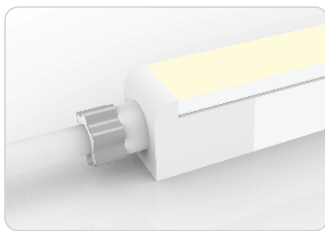
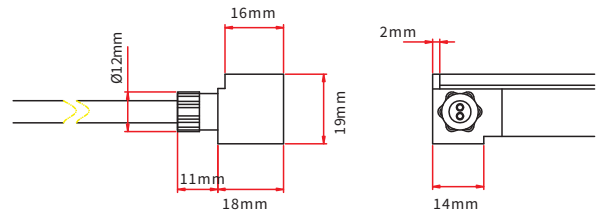
Connects light to power supply with pre-installed bottom feed cable IP67. Available in 0.3m, 1m, 3m, 5m, 10m, 15m, 20m lengths.





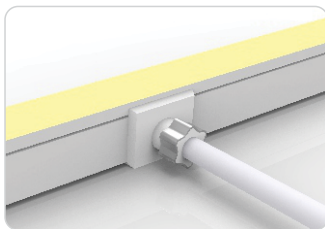
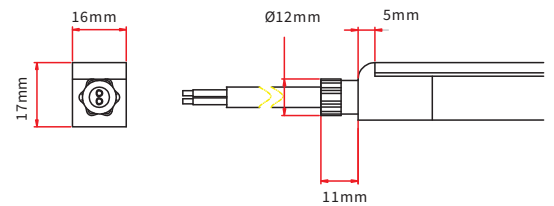
INJECTION-MOULDED FRONT CONNECTOR (SIDE)

Connects light to power supply with pre-installed side feed cable, IP67. Available in 0.3m, 1m, 3m, 5m, 10m, 15m, 20m lengths.



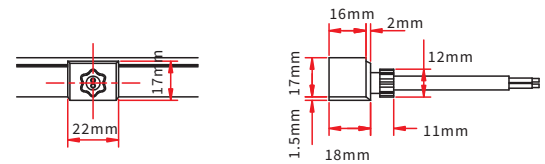
INJECTION-MOULDED FRONT CONNECTOR (END)

Connects light to power supply with pre-installed end feed cable, IP67. Available in 0.3m, 1m, 3m, 5m, 10m, 15m, 20m lengths.



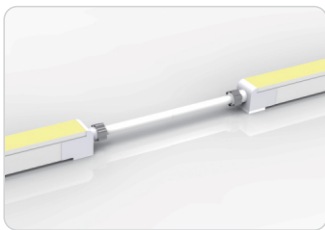
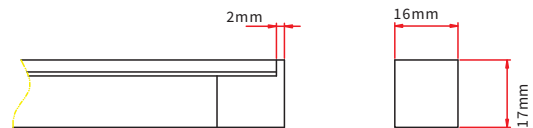
INJECTION-MOULDED MIDDLE FEED CONNECTOR

Connects light to power supply with pre-installed end feed cable, IP67. Available in 0.3m, 1m, 3m, 5m, 10m, 15m, 20m lengths.



INJECTION-MOULDED END CAP

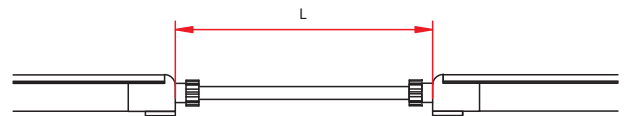
Pre-installed termination protection of the light, IP67.



INJECTION-MOULDED JUMPER

Connects two pieces of lights together with a flexible cable. IP67 Injection-moulded connector. L available in 0.3-1m.

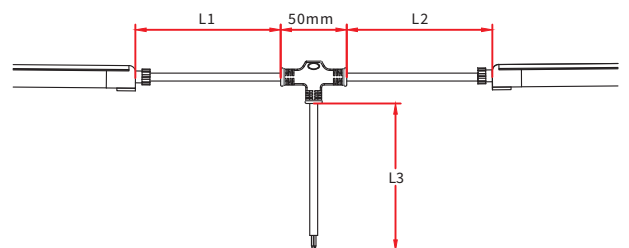
Maximum 8 Jumpers in 20m
Maximum 4 Jumpers in 10m



INJECTION-MOULDED T-FEED

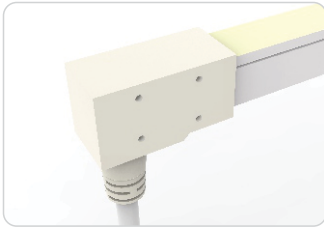
Connects two pieces of lights together with a T joint, energized from middle. IP67 Injection-moulded connector. L1 and L2 available in 0.15-0.5m. L3 available in 0.3-3m.

Maximum 8 T-feeds in 20m
Maximum 4 T-feeds in 10m



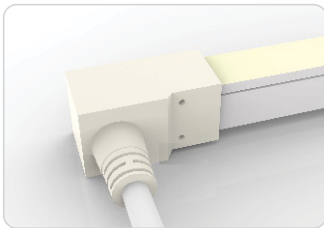
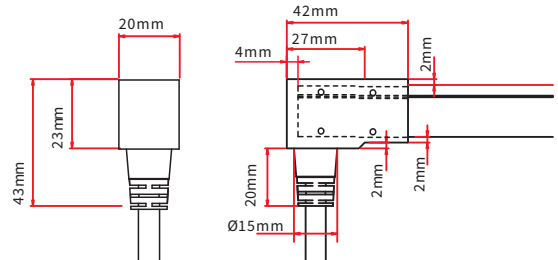
DUAL INJECTION-MOULDED CONNECTOR

Note: Unless otherwise stated, the tolerance of the connector is $\pm 0.5\text{mm}$.



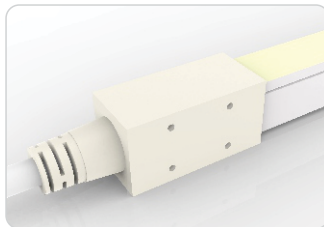
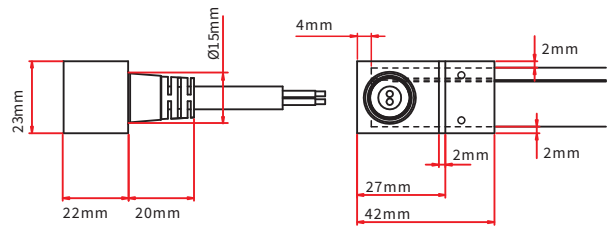
DUAL INJECTION-MOULDED FRONT CONNECTOR (BOTTOM)

Connects light to power supply with pre-installed bottom feed cable, IP68. Cable length available in 0.3m, 1m, 3m, 5m, 10m, 15m, 20m.



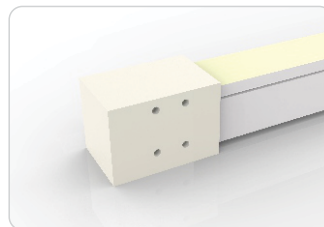
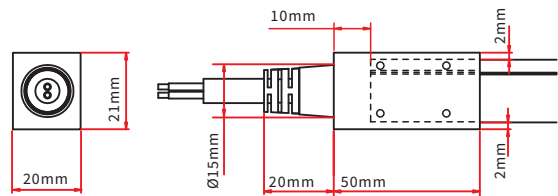
DUAL INJECTION-MOULDED FRONT CONNECTOR (SIDE)

Connects light to power supply with pre-installed side feed cable, IP68. Cable length available in 0.3m, 1m, 3m, 5m, 10m, 15m, 20m.



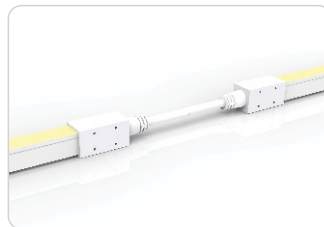
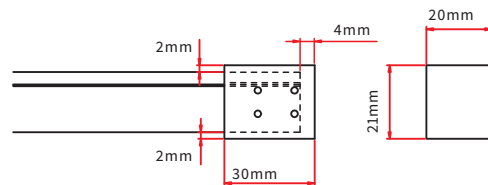
DUAL INJECTION-MOULDED FRONT CONNECTOR (TOP END)

Connects light to power supply with pre-installed end feed cable, IP68. Cable length available in 0.3m, 1m, 3m, 5m, 10m, 15m, 20m.



DUAL INJECTION-MOULDED END CAP

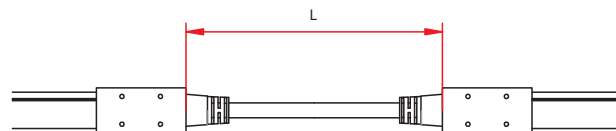
Pre-installed termination protection of the light, IP68.



DUAL INJECTION-MOULDED JUMPER

Connects two pieces of lights together with a flexible cable. IP68 Dual Injection-moulded connector. L available in 0.3~1m.

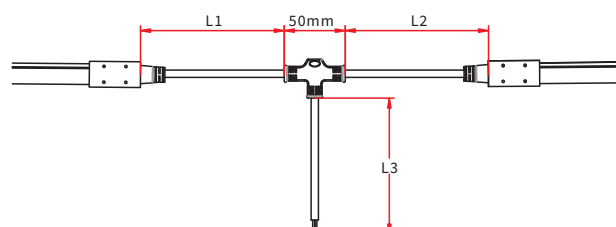
Maximum 8 Jumpers in 20m
Maximum 4 Jumpers in 10m



DUAL INJECTION-MOULDED T-FEED

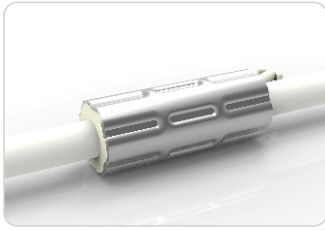
Connects two pieces of lights together with a T joint, energized from middle. IP68 Dual Injection-moulded connector. L1 and L2 available in 0.15~0.5m. L3 available in 0.3-3m.

Maximum 8 T-feeds in 20m
Maximum 4 T-feeds in 10m



ANTI-WICKING FERRULE

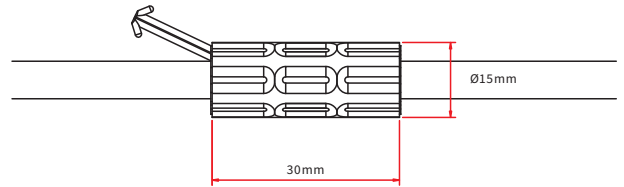
Note: Unless otherwise stated, the tolerance is $\pm 0.5\text{mm}$.



ANTI-WICKING FERRULE

The anti-wicking ferrule is located at 115mm ($\pm 5\text{mm}$ tolerance) from the connector on the cable.

For protection against water ingress from inside of cable wire and hence damage the light.



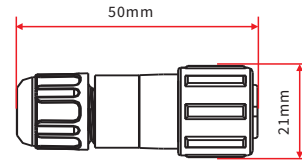
MALE & FEMALE CONNECTOR

Note: Unless otherwise stated, the tolerance is $\pm 2\text{mm}$.



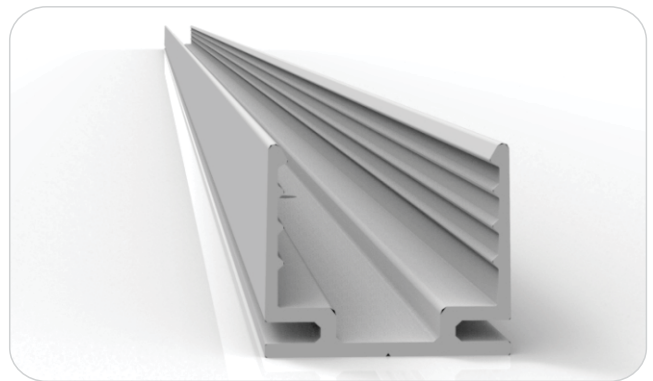
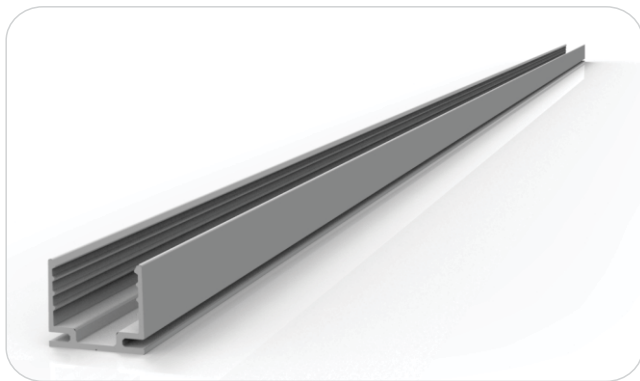
MALE & FEMALE CONNECTOR

For plug and play cable junction, DIY or Pre-installed connector, IP68



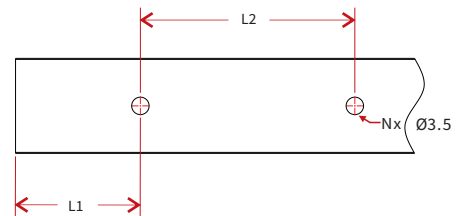
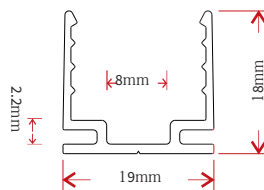
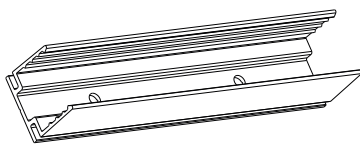
MOUNTING PROFILE

STANDARD ALUMINUM PROFILE



DIMENSIONS

Note: Unless otherwise stated, the tolerance of the profile is $\pm 0.5\text{mm}$.

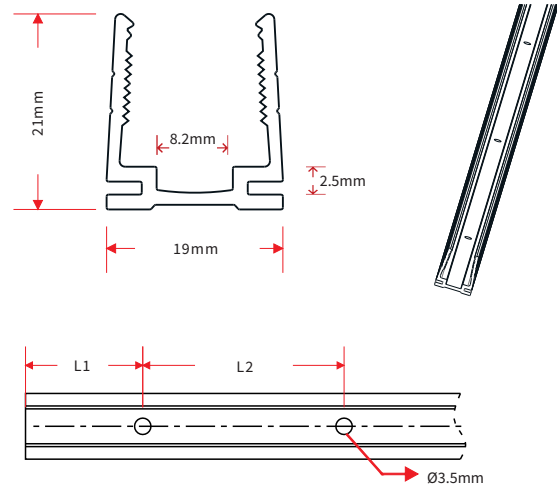


INSTALLATION WAY



Model	W*H(mm)	Standard Length (mm)	L1 (mm)	L2 (mm)	Screw Hole (mm)	Hole Number
Y22-A/PL	19*18	35	17.5	/	Ø3.5	1
		500	50	200	Ø3.5	3
		1000	100	200	Ø3.5	5
		2000	100	200	Ø3.5	10

PLASTIC PROFILE



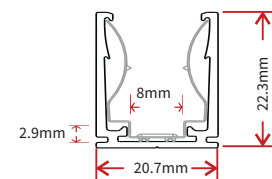
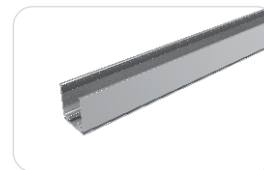
Note: Unless otherwise stated, the tolerance of the profile is $\pm 0.5\text{mm}$.

INSTALLATION WAY



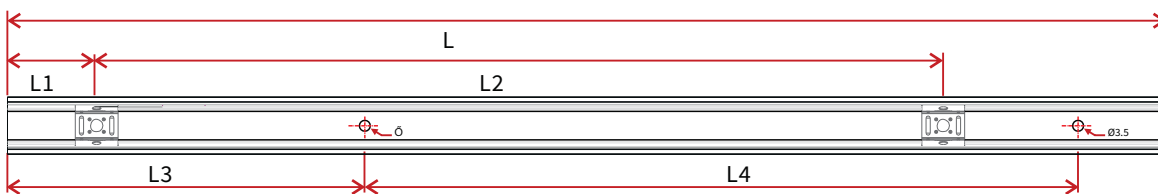
Model	W*H(mm)	Standard Length (mm)	L1 (mm)	L2 (mm)	Screw Hole (mm)	Hole Number
Y22 -PC/PL	19*21	500	50	200	Ø3.5	3
		1000	100	200	Ø3.5	5
		2000	100	200	Ø3.5	10

SPRING CLIP ALUMINUM PROFILE



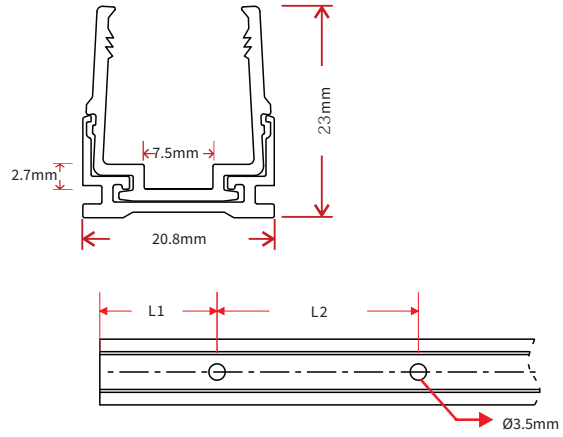
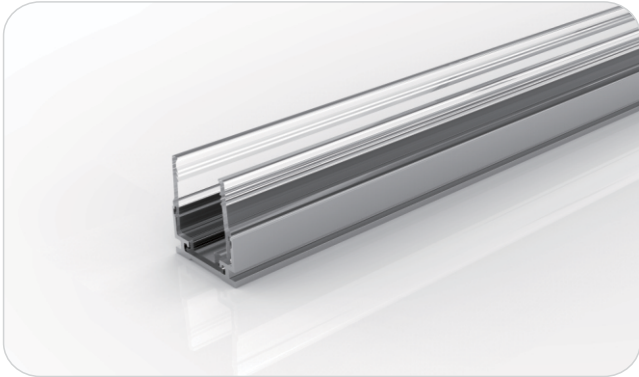
Note: Unless otherwise stated, the tolerance of the profile is $\pm 0.5\text{mm}$.

INSTALLATION WAY



Model	W*H(mm)	Standard Length(mm)	L1(mm)	L2(mm)	L3(mm)	L4(mm)	Hole Screw(mm)	Hole Number	Clip Number
Y22-SLA/PL	20.5 x 20	35	17.5	/	5	25	Ø3.5	2	1
		500	25	25	50	200	Ø3.5	3	4
		1000	25	25	100	200	Ø3.5	5	6
		2000	25	25	100	200	Ø3.5	10	11

HYBRID PROFILE



Note: Unless otherwise stated, the tolerance of the profile is $\pm 0.5\text{mm}$.

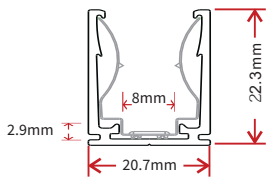
INSTALLATION WAY



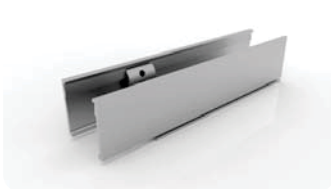
Model	W*H(mm)	Standard Length (mm)	L1 (mm)	L2 (mm)	Screw Hole (mm)	Hole Number
Y22 -HP/PL	20.8*23	35	17.5	/	Ø3.5	1
		500	50	200	Ø3.5	3
		1000	100	200	Ø3.5	5
		2000	100	200	Ø3.5	10

CABLE EXIT ORIENTED ALUMINUM PROFILE

(APPLICABLE TO INJECTION-MOULDED CONNECTOR ONLY)



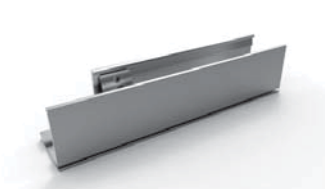
Note: Unless otherwise stated, the tolerance of the profile is $\pm 0.5\text{mm}$.



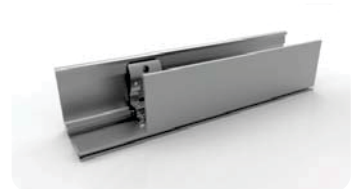
Bottom Feed



Middle Feed



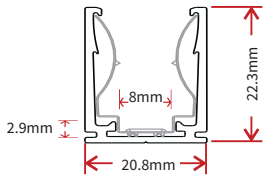
Side Feed From Left



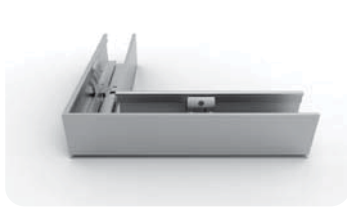
Side Feed From Right

CORNER ALUMINUM PROFILE

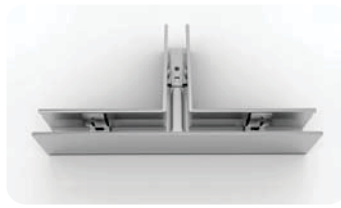
(APPLICABLE TO INJECTION-MOULDED CONNECTOR ONLY)



Note: Unless otherwise stated, the tolerance of the profile is ±0.5mm.



L Shape



T Shape



Outward L Shape



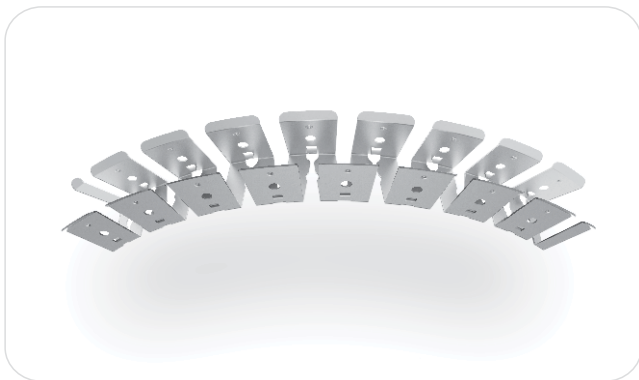
Inward L Shape



X Shape

NOTE: Please contact our sales team for more detailed information

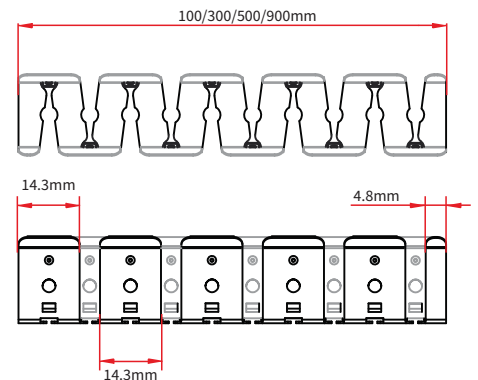
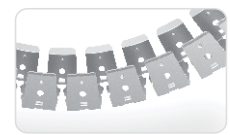
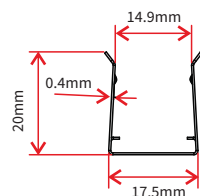
CURVE STAINLESS STEEL PROFILE



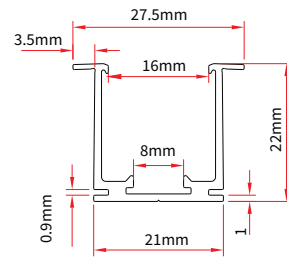
Model: Y22-CS/PL

Note: Unless otherwise stated, the tolerance of the profile is ±0.5mm.

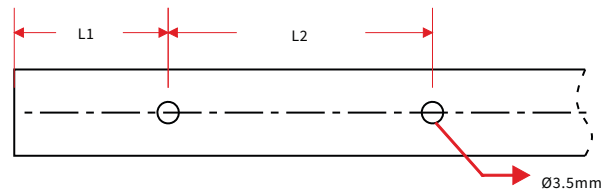
INSTALLATION WAY



RECESSED MOUNTING PROFILE



Note: Unless otherwise stated, the tolerance of the profile is $\pm 0.5\text{mm}$.



Model	W*H(mm)	Standard Length (mm)	L1 (mm)	L2 (mm)	Screw Hole (mm)	Hole Number
Y22 -RMA/PL	27.5*22	35	5	25	Ø3.5	2
		500	50	200	Ø3.5	3
		1000	100	200	Ø3.5	5
		2000	100	200	Ø3.5	10