

LINEAR WALLWASHER PRO SERIES

LWW PRO-Mono



YYZ Linear wall washer Pro series linear light is new solution for large-scale. High-brightness architectural illumination. Streamline design with 6063 high aluminium alloy and easy installation. Integrated design of heat dissipating structure and professional degassing valve device. The modular system available in 410mm, 605mm or 1190mm lengths and can be customized as per project situation, IP66 structural waterproof suitable for a wide range of wall grazing, linear and indirect illumination for exterior architectural, retail and hospitality applications.

FEATURES

LED QUANTITY	12 LED/ft
FINISH	6063 HIGH DENSITY ALUMINUM
WORKING VOLTAGE	100-277 V AC 50/60Hz
RATED POWER	16/24/48W
BEAM ANGLE	20°, 35°, 50°. 10x40°
AVAILABLE LENGTH	410MM, 605MM, 1190mm
MOUNTING	SURFACE MOUNTING
OPTIC	CLEAR TEMPERED GLASS
DIMENSIONS	410, 605, 1190(L) x 50(B) x 69.3(H)
OPERATION TEMP	-40° C - +50° C
STORAGE TEMP	-40° C - +85° C
LAMP LIFE	70000 Hrs
BODY COLOR	BLACK, GRAY, WHITE
CONTROL	DMX, DALI, 0-10V, ON/OFF

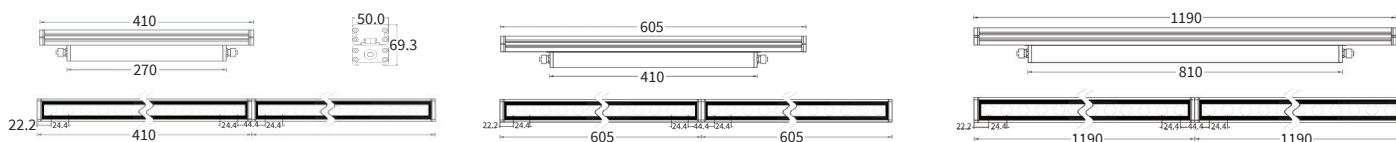


- CREE / NICHIA
LED Quality
- 100-240 VAC
Working Voltage
- 16 W (410mm), 24 W(605mm)
48 W(1190mm)
Rated power

ELECTRICAL DATA

POWER CONSUMPTION	410mm-16W, 605mm-24W, 1190mm-48W
SUPPLY VOLTAGE	100-240 V AC 50/60Hz
COLORS	2700K, 3000K, 4000K, 5000K, 5700K, 6500, RED, BLUE, GREEN
CRI	80, 90+
LUMEN	90-100 lm/W @ 3500K

DIMENSION



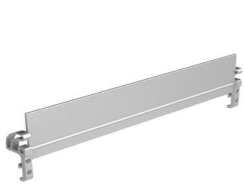
ORDERING LOGIC

PRODUCT	POWER	OPTIC	COLOR TEMPERATURE	CONTROL	VOLTAGE	FIXTURE LENGTH	BODY COLOR	CUSTOM	
LWW PRO	16 - 16W (410mm)	20 -	20° (CT27)	2700K	DX -	240 - 100-240VAC	BK - BLACK	XX	
			35° (CT30)	3000K	DA -				
			50° (CT35)	3500K	AN - Analogue (0-10v)				
	24 - 24W (605mm)	35 -	10x40 -	10° x 40°	SW -		ON/OFF	GR - GRAY	
			(CT40)	4000K					
			(CT50)	5000K					
	48 - 48W (1190mm)	50 -	(CT57)	5700K				WH - WHITE	
			(CT65)	6500K					
			(CTRE)	RED					
			(CTGR)	GREEN					
			(CTBL)	BLUE					

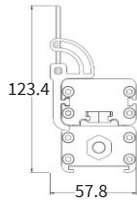
Sample: LWWPRO - 16 - 20 - CT27 - DX - 240 - 410 - BK - XX

LWW PRO-Mono

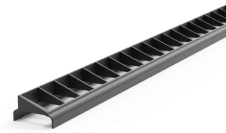
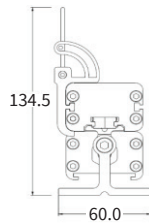
ANTI-GLARE ACCESSORIES



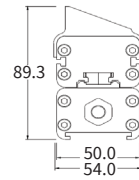
Item: YZAGS-410/605/1190
Anti-glare shield



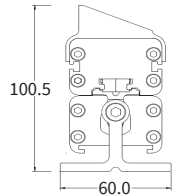
Height with/without mounting bracket (YYZMBA-H81)



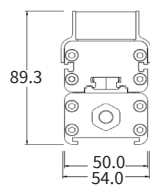
Item: YZGLA-410/605/1190-RGBW
Asymmetric anti-glare louver



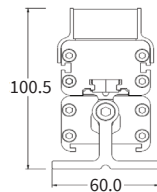
Height with/without mounting bracket (YYZMBA-H81)



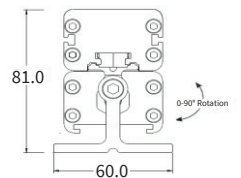
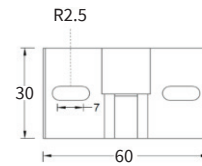
Item: YZGLS-410/605/1190-RGBW
Symmetric anti-glare louver



Height with/without mounting bracket (YYZMBA-H81)



Item: YZMBA-H81
Description: YZMBA-H81 is an adjustable mounting option are used for applications that require angle adjustments. It can rotate up to 180°



EXTENSION CABLE



Item: YZACF-300-3pin
3-pin 300mm female Power lead in cable to bare wire

Item: YZDCAPAC-3pin-M
3-pin cable male cable end cap



Item: YZACL-020-3pin
3-pin 2 meters male to female extension cable



Item: YZACL-100-3pin
3-pin 10 meters male to female extension cable

YYZ P0427(65).35



Item: YZDCF-300-3pin
3-pin 300mm female lead in cable to bare wire



Item: YZDCAP-3pin-M
3-pin cable male cable end cap/DMX Terminator



Item: YZ-XLR-ECDCF
XLR-3 connector to 3-pin female connector. Customized DMX data lead in cable which connects the DMX controller with XLR-3 sockets to the first fixture of the daisy chain



Item: YZDCL-020-3pin
3-pin 2 meters male to female extension cable



Item: YZDCL-100-3pin
3-pin 10 meters male to female extension cable