

INDOOR WARDROBE SENSOR LIGHT

WSL03

IP20
NON-WATER
PROOF

CE

9.0W

YYZ WSL series are minimalistic rigid profiles designed to provide subtle lighting creating a cosy ambience inside a wardrobe. Option of integrated sensor makes it a great energy saving solution. Custom made to lengths makes it suited for various project applications.



FEATURES

LED CHIP	COB
LED QUANTITY	480Pcs/m
FINISH	WHITE PCB
WORKING VOLTAGE	24 V
RATED POWER	9.0W / m
RADIANCE ANGLE	120°
LAMP LIFE (L80 B 10)	54000 Hrs
CONNECTION	HARDWIRED TAIL 2m LENGTH WHITE
LUMEN	900lm/m

CREE
LED Quality

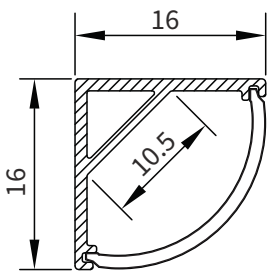
24V
Working Voltage

9.0W / m
Rated power

ELECTRICAL DATA

POWER CONSUMPTION	9.0W
SUPPLY VOLTAGE	24 V
COLORS	3000K / 3500K/ 6000K
CRI	90

DIMENSION



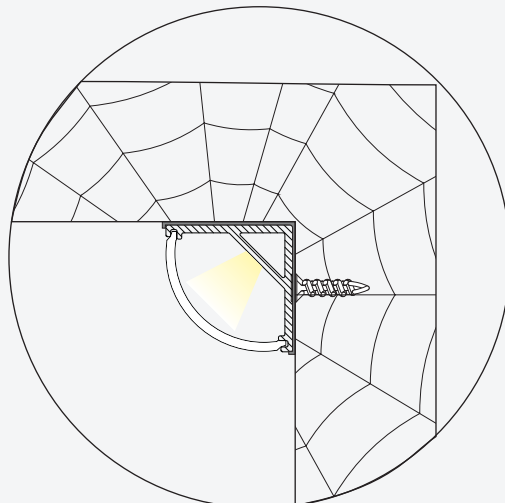
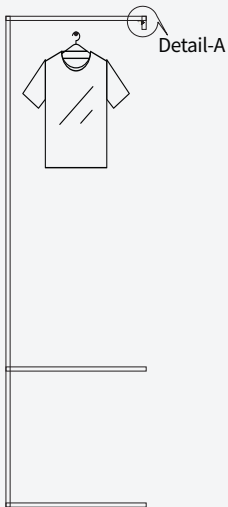
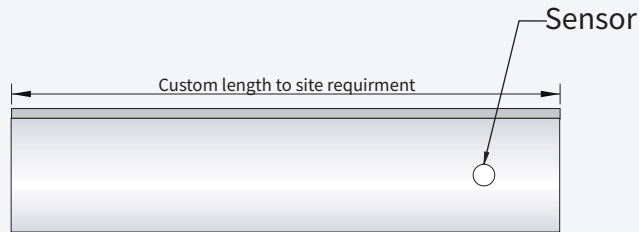
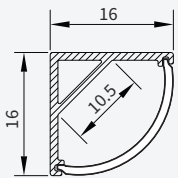
SENSOR

ORDERING LOGIC

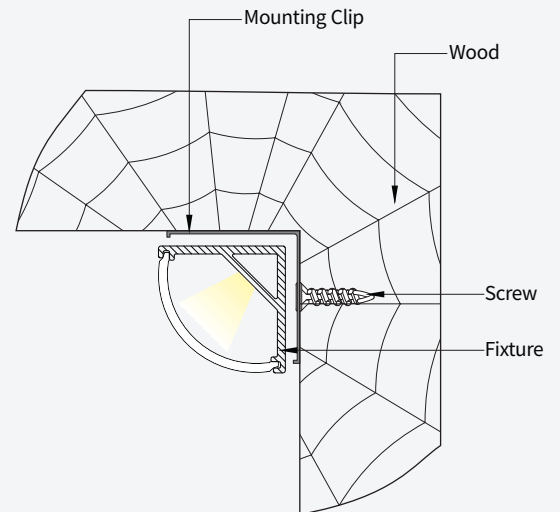
PRODUCT SERIES	TYPE	POWER	COLOR TEMPERATURE		LED TYPE	VOLTAGE	CONTROL	PROFILE LENGTH	DIFFUSER	MOUNTING	CUSTOM
WSL03	I - INDOOR (IP20)	09.00 - 9.0W	(CT30)	3000K	COB	24-24V	SR - IR Sensor	1000 - 1000mm	OP - Opal	CP - Clip	xx
			(CT35)	3500K				2000 - 2000mm	FR - Frosted		
			(CT60)	6000K				XXXX - Custom	CL - Clear		

Sample: WSL03 - I - 09.00 - CT30 - COB - 24 - SR - 1000 - OP - CP - XX

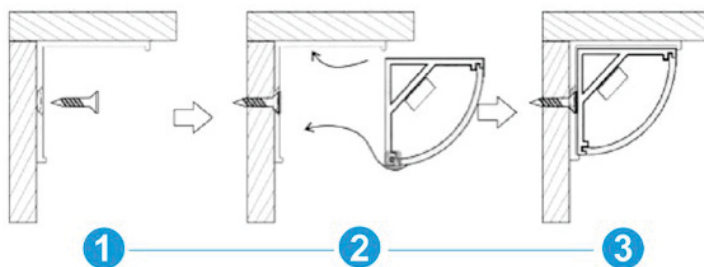
PROFILE DIMENSIONS AND INSTALLATION



Detail-A



Fixing



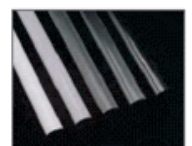
Install the fixing clip onto the wood using the screws provided. Click fit the light fixture onto the clip to hold it in place.



Aluminium Profile



Mounting Clip(metal)



Cover