

PIXEL DOT 1.5 SERIES

PXLD 1.5 RGB



The Pixel Dot 1.5 is a low power LED string product designed for outdoor façade & landscape lighting. It adopts engineering grade flame-retardant plastic PC shell, which is sealed and waterproof by high thermal conductivity and weather-resistant PU glue; the lamp point is small in size and exquisite in appearance; the light string is connected by the high standard flexible cable, which can be bent and deformed at will, and supports the installation of special-shaped facade; The product spacing and color can be customized; it is suitable for large-area display or lighting of building facades, bridges and skylights.

FEATURES

| | |
|---------------------------|-------------------------------------|
| CONTROL GEAR | Remote |
| OPTIC | Clear/ Diffuser |
| INPUT VOLTAGE | 24V DC |
| POWER CONSUMPTION | 1.5W/Node |
| MOUNTING | Surface mounted |
| LUMINOUS FLUX | 38lm /W, 57 lms (Red-18, G-32, B-7) |
| BRAND OF LEDS | Epistar |
| BEAM ANGLE | 120° |
| CONTROL | DMX |
| MATERIAL | Aluminium |
| FINISHING (COLOR HOUSING) | Black, White, Grey |
| LED LIFETIME | 50,000hrs L70, B10 |
| DIMENSION | Ø40x29.8mm |
| OPERATIONG TEMP | -10C ~ 50°C |

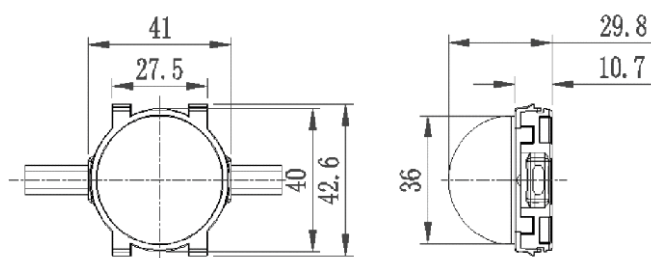


- EPISTAR LED Quality
- 24V DC Working Voltage
- 1.5W/Node Rated power

ELECTRICAL DATA

| | |
|-------------------|-----------|
| POWER CONSUMPTION | 1.5W/Node |
| SUPPLY VOLTAGE | 24V DC |
| CRI | 90 |
| COLORS | RGB |

DRAWING



ORDERING LOGIC

| PRODUCT | WATTAGE | COLOR TEMPERATURE | CONTROL | INPUT VOLTAGE | OPTIC | FINISH | ACCESSORIES |
|----------|------------|-------------------|----------|---------------|------------|--|--|
| PXLD 1.5 | 1.5 - 1.5W | (RGB) - RGB | DX - DMX | 24 - 24VDC | 120 - 120° | BK - Black WH - White GR - Grey XX - Custom | OP - Opal CD - Clear Diffuser (Transparent flat shell) CDT - Clear Diffuser (Translucent bulb) |

Sample: PXLD 1.5 - 1.5 - RGB - DX - 24 - 120 - BK - OP